

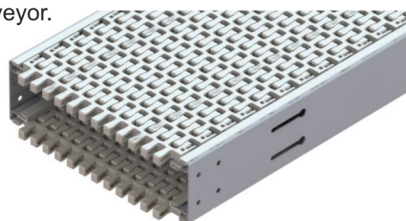
# MODU DT2 CONVEYOR SERIES

## Technical Characteristics

Chain Width	315 mm
Chain Pitch	45.0 mm
Chain Weight	3.8 kg/m
Chain Working Tension (Max) With Bend Without Bend	1400 N 1500 N
Max Product Weight* <i>Horizontal Transport</i> <i>Vertical Transport</i>	30.0 kg 15.0 kg
Total Load*	400 kg
Working Temperature*	-10°C to 60°C
Max Conveyor Length*	30 m
Max speed*	50 m/min
Drive Unit Capacity	1500 N
Item Width*	<500 mm

\* Actual limit may vary according to conveyor layout and application.

\*\* Maximum 1x 90° bend in one conveyor.

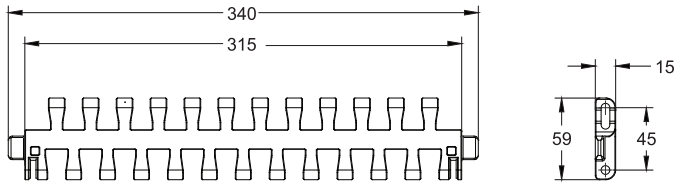


## Chain Width 315mm

### Contents

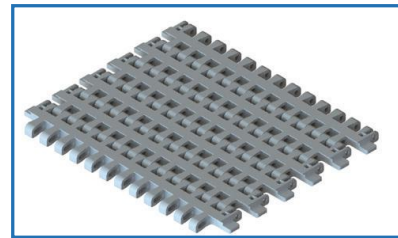
Belt MT2 .....	282	Bottom Tab (BT) Belt DT2 .....	288
Belt Accessories MT2 .....	283	Conveyor Beam (BT) DT2 .....	288
Drive Units DT2 .....	284	Accessories DT2 .....	288
Idler Unit DT2 .....	284	Drive Units (BT) DT2 .....	289
Conveyor Beam DT2 .....	285	Idler Unit (BT) DT2 .....	289
Accessories DT2 .....	285	Horizontal Plain Bend (BT) DT2 .....	290
Horizontal Plain Bend DT2 .....	286		
Belt Elongation Section DT2 .....	287		

**Belt MT2**

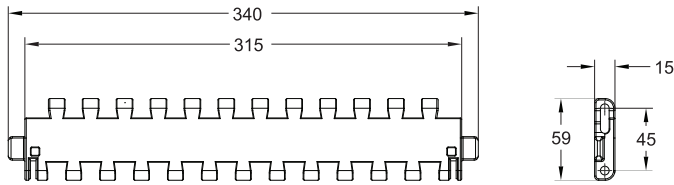


**Plastic Plain Curve Belt**

- 8.5mm opening gap.
- Suitable for conveyor configuration with incline/decline up to 7°.
- Accumulation possible.

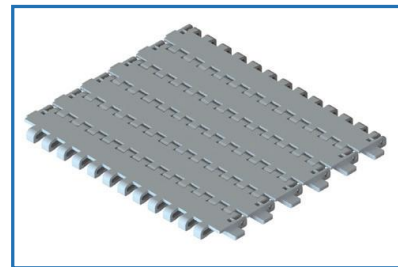


Item Code	Material	Color	Weight	Supply
MT2 CP 5	POM	White	19.0 kg/roll	5m/roll
MT2 CP 5 P	PP	White	13.5 kg/roll	5m/roll

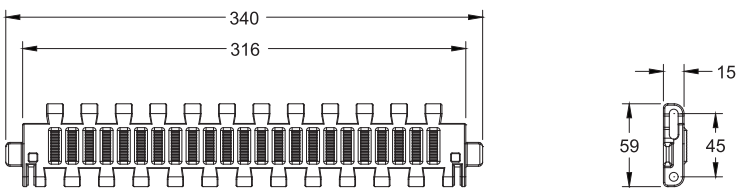


**Plastic Plain Straight Belt**

- Suitable for conveyor configuration with incline/decline up to 7°.
- Accumulation possible.

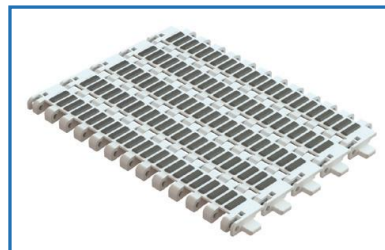


Item Code	Material	Color	Weight	Supply
MT2 CP 5 ZG	POM	White	20.6 kg/roll	5m/roll
MT2 CP 5 ZG P	PP	White	14.8 kg/roll	5m/roll



**Friction Belt**

- Suitable for conveyor configuration with incline/decline up to 25°.
- Friction material : TPE (grey).
- Straight running only (0mm gap)
- Accumulation not possible.

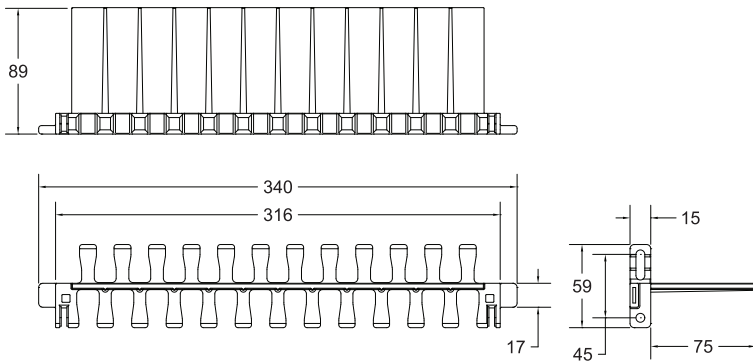


Item Code	Material	Color	Weight	Supply
MT2 CF 5 ZG	PP	White	19.0 kg/roll	5m/roll

Please consult MODU representative for further information and assistance.

Units: Dimension (mm)

## MODU DT2 SERIES - BELT



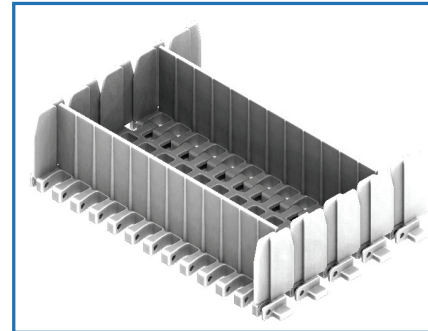
\*P  
Please specify pitch between cleat for ordering  
(eg. MT2 CC 3x75 3P ; 3P = Every 3rd link to be cleated).

Item Code	Material	Color	Weight	Supply
MT2 CC 3x75 *P	POM	White	** kg/pc	1 pc

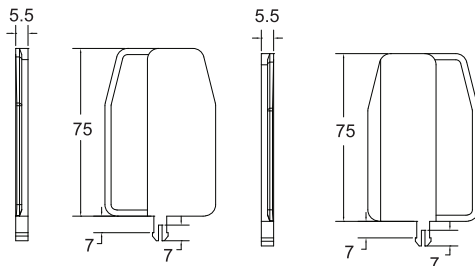
\* Non-standard height available upon request but cleat material is different.

### Plastic Cleated Link

- Required for vertical or steeply inclined / declined conveyor.
- Accumulation not possible.
- Supply in pieces without side guide.

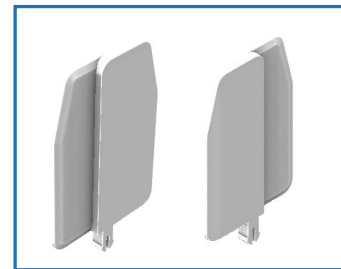


\* Side guide cleats are optional



Item Code	Material	Color	Weight	Supply
MT2 CLP G-75	POM	White	1.7 kg	50 set/pkt

### Side Guard L-R



## Belt Accessories MT2

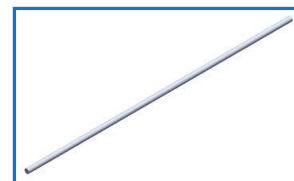
### Lubricant For Belt



Silicone-based lubricant,  
400ml

Item Code	Weight	Supply
MA SL	0.35 kg/can	1 can

### Belt Pin



Item Code	Material	Weight	Supply
MT2 PC	POM	0.12 kg	10 pcs / pkt

### Belt Lock



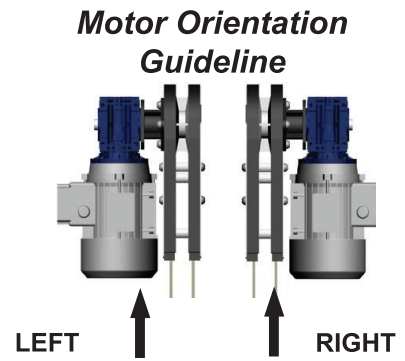
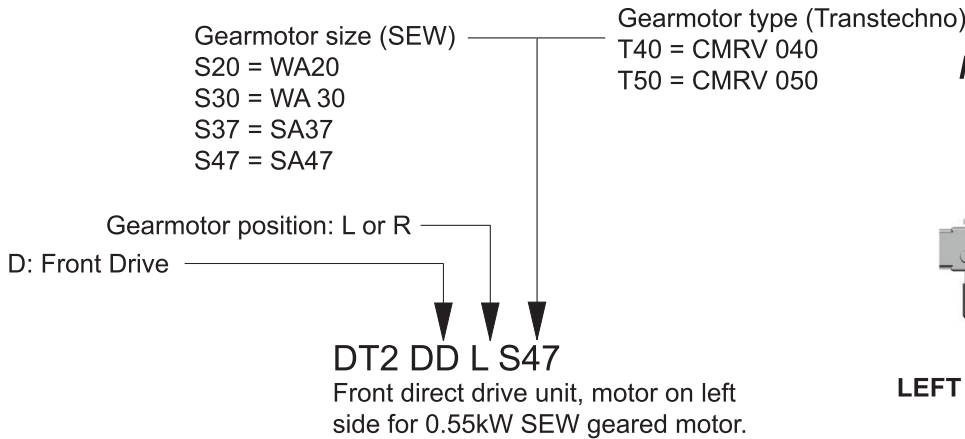
Item Code	Material	Color	Weight	Supply
MT2 BL	POM	White	0.07 kg	10 pcs / pkt

Please consult MODU representative for further information and assistance.

Units: Dimension (mm)

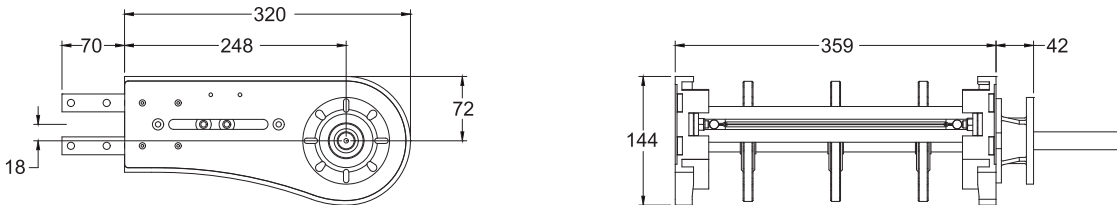
# MODU DT2 SERIES - DRIVE & IDLER UNIT

## Drive Units DT2

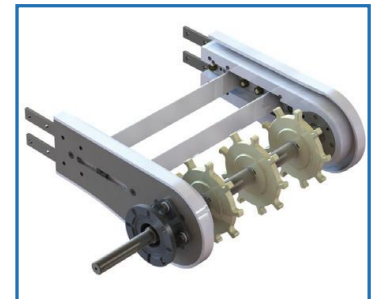


Example. Code for Basic unit;  
**DT2 DD R S47** => Front drive unit, motor on right side for SEW SA47 gearmotor.

## Front Drive Unit

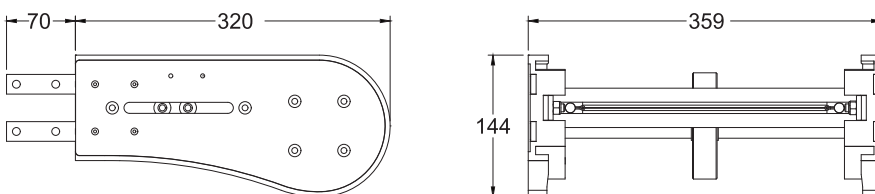


- Effective track length: 0.8m
- Traction force: 1500N
- Connecting strip and M8 hex screw included.
- Built in with CIS

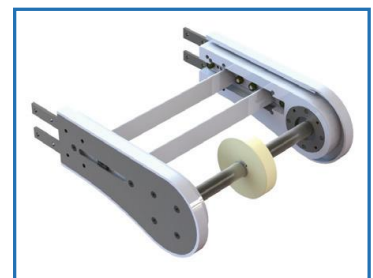


Item Code	Description	Weight	Supply
DT2 DD R/L S/T	Basic drive unit	9.4 kg	1 unit

## Idler Unit DT2



- Effective track length: 0.8m
- Connecting strip and M8 hex screw included.
- Built in with CIS



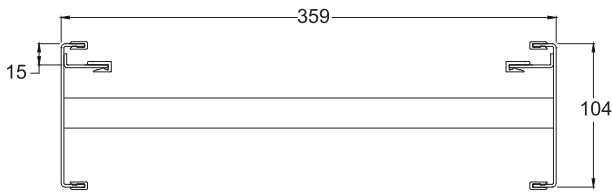
Item Code	Description	Weight	Supply
DT2 IE 320	Basic idler unit	8.3 kg	1 unit

Please consult MODU representative for further information and assistance.

Units: Dimension (mm)

## MODU DT2 SERIES - BEAM AND ACCESSORIES

### Conveyor Beam DT2

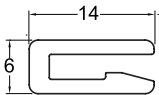


Item Code	Weight	Supply
DT2 CB 2.4	18.5 kg	2.4m / beam
DT2 CB L	**L kg	L / beam

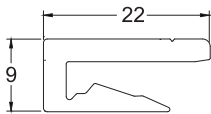
- Available length:  
 L = between 100, 200mm up 1200mm  
 - eg: for 500mm beam, part number is DT2 CB 0.5  
 - if beam required is 1.5m, then L = 1.2m + 0.3m  
 (order part number = DT2 CB 1.2 & DT2 CB 0.3)

### Accessories DT2

#### Slide Rail

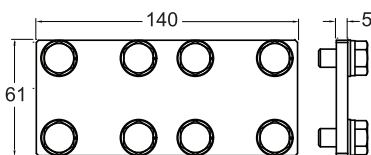


Item Code	Material	Color	Weight	Supply
MS SR 25	HDPE	Semi-Transparent White	1.2 kg	25m/roll
MS SR 25A	Anti-Static	Grey	1.2 kg	25m/roll

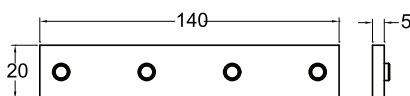


Item Code	Material	Color	Weight	Supply
MA2 SR 25	HDPE	Semi-Transparent White	2.8 kg	25m/roll
MA2 SR 25A	Anti-Static	Grey	2.8 kg	25m/roll

#### Connecting Strip



Item Code	Weight	Supply
DA CS 61x140	4.0 kg	10 pcs/pkt



Item Code	Weight	Supply
DA CS 20x140	1.1 kg	10 pcs/pkt

- M8 set screw included

#### Screw



Item Code	Weight	Supply
MA RS 6.5	0.02 kg	50 pcs/pkt

#### Rivet



Item Code	Weight	Supply
MA RR 3	0.02 kg	50 pcs/pkt

#### Slide Rail Assembling Tool



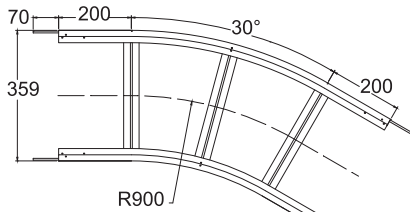
Item Code	Weight	Supply
MT2 SRA	0.4 kg	1 unit

Please consult MODU representative for further information and assistance.

Units: Dimension (mm)

## MODU DT2 SERIES - HORIZONTAL PLAIN BEND

### Horizontal Plain Bend DT2

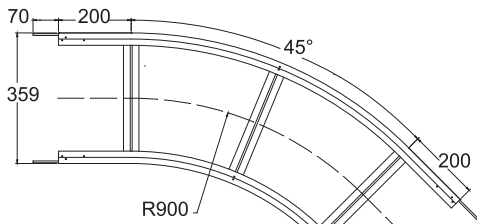


Effective track length:  
R900: 0.87m 1-way (1.74m 2-way)

#### Horizontal Plain Bend, 30°

Item Code	Radius (R)	Weight	Supply
DT2 BP 30R900	900 mm	7.2 kg	1 unit

Tolerance:  $\pm 2^\circ$  & Radius:  $\pm 10\text{mm}$   
- Connecting strip and M8 hex screw included.

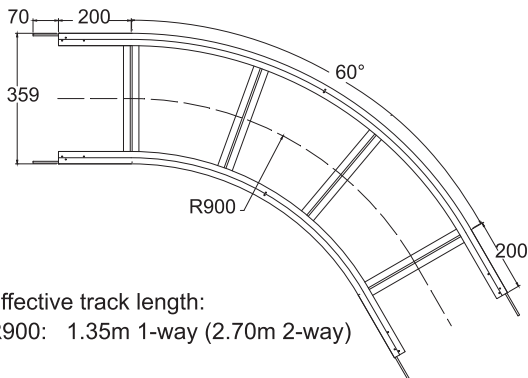


Effective track length:  
R900: 1.11m 1-way (2.22m 2-way)

#### Horizontal Plain Bend, 45°

Item Code	Radius (R)	Weight	Supply
DT2 BP 45R900	900 mm	8.3 kg	1 unit

Tolerance:  $\pm 2^\circ$  & Radius:  $\pm 10\text{mm}$   
- Connecting strip and M8 hex screw included.

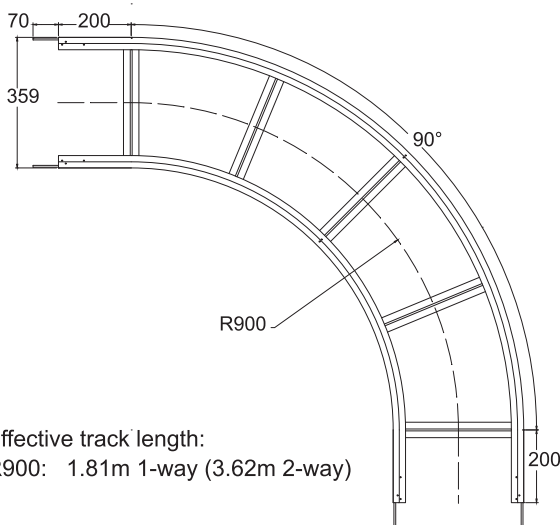


Effective track length:  
R900: 1.35m 1-way (2.70m 2-way)

#### Horizontal Plain Bend, 60°

Item Code	Radius (R)	Weight	Supply
DT2 BP 60R900	900 mm	10.2 kg	1 unit

Tolerance:  $\pm 2^\circ$  & Radius:  $\pm 10\text{mm}$   
- Connecting strip and M8 hex screw included.



Effective track length:  
R900: 1.81m 1-way (3.62m 2-way)

#### Horizontal Plain Bend, 90°

Item Code	Radius (R)	Weight	Supply
DT2 BP 90R900	900 mm	14.2 kg	1 unit

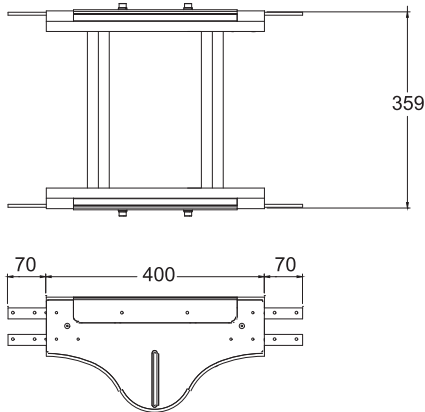
Tolerance:  $\pm 2^\circ$  & Radius:  $\pm 10\text{mm}$   
- Connecting strip and M8 hex screw included.

Please consult MODU representative for further information and assistance.

Units: Dimension (mm)

## MODU DT2 SERIES - COMPONENTS

### Belt Elongation Section DT2



- To be used with straight belt (zero gap).
- Slide rail, connecting strip and M8 hex screw included.



Item Code	Weight	Supply
DT2 CSS 400	7.3 kg	1 unit

AP

TR

MP

MS3

MM3

ML2

MX2

MT2

MR2

MF2

MPP

MM3P

ML2P

MDP

MG

MB

MA

DS3

DM3

DL2

DX2

**DT2**

DR2

DF2

DG

DB

DA

SD

SE

TL

IM

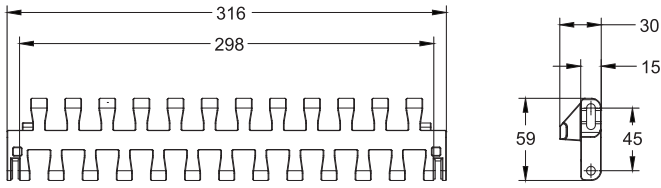
MM

Please consult MODU representative for further information and assistance.

Units: Dimension (mm)

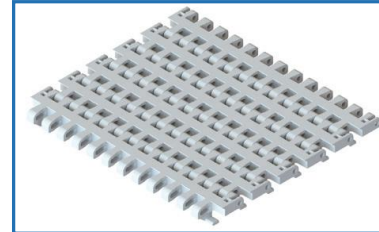
## MODU DT2 SERIES - BOTTOM TAB COMPONENTS

### Bottom Tab (BT) Belt DT2



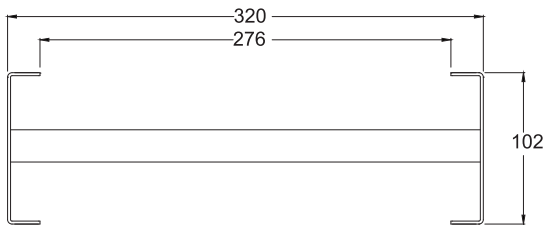
#### Plastic Plain Curve Belt (Bottom Tab)

- 8.5mm belt gap.
- Suitable for conveyor configuration with incline/decline up to 7°.
- Accumulation possible.



Item Code	Material	Color	Weight	Supply
MT2 CP 5 BT	POM	White	19.0 kg/roll	5m/roll
MT2 CP 5 BT PP	PP	White	13.5 kg/roll	5m/roll

### Conveyor Beam (BT) DT2

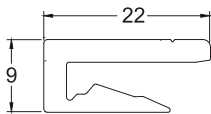


Item Code	Weight	Supply
DT2 CB 2.4 BT	18.5 kg	2.4m / beam
DT2 CB L BT	**L kg	L / beam

- Available length:  
L = between 100, 200mm up 1200mm
- eg: for 500mm beam, part number is DT2 CB 0.5 BT
- if beam required is 1.5m, then L = 1.2m + 0.3m  
(order part number = DT2 CB 1.2 BT & DT2 CB 0.3 BT)

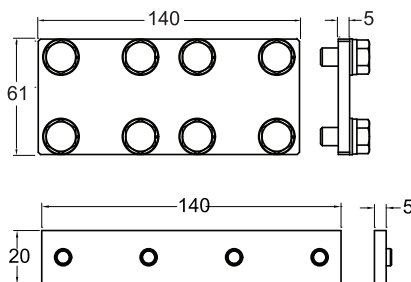
### Accessories DT2

#### Slide Rail



Item Code	Material	Color	Weight	Supply
MA2 SR 25	HDPE	Semi-Transparent White	2.8 kg	25m/roll
MA2 SR 25A	Anti-Static	Grey	2.8 kg	25m/roll

#### Connecting Strip



Item Code	Weight	Supply
DA CS 61x140	4.0 kg	10 pcs/pkt

Item Code	Weight	Supply
DA CS 20x140	1.1 kg	10 pcs/pkt

- M8 set screw included

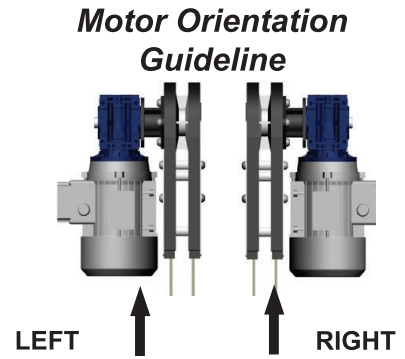
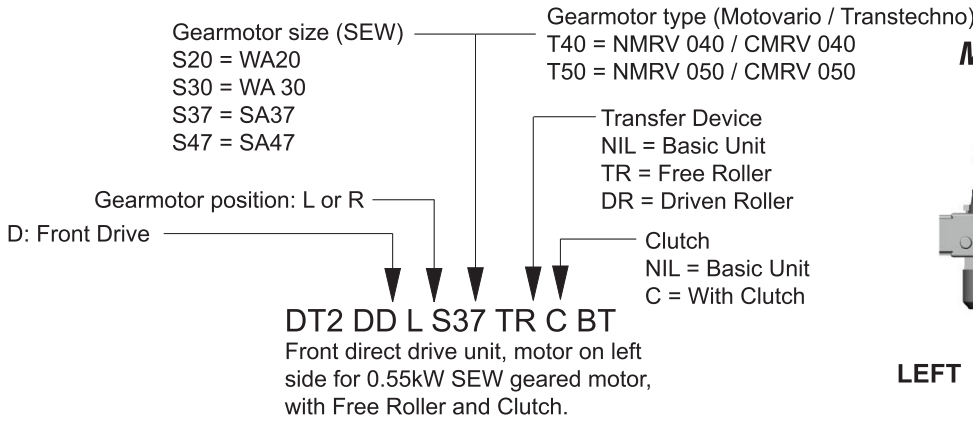
Please consult MODU representative for further information and assistance.

Units: Dimension (mm)



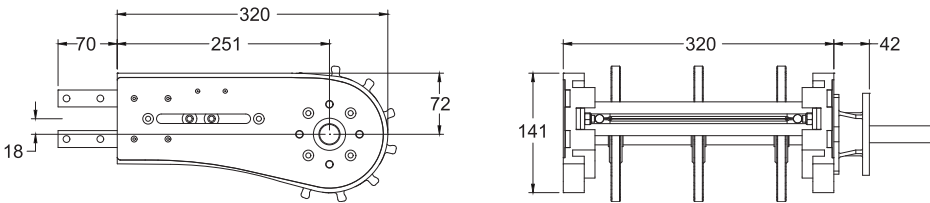
# MODU MT2 SERIES - BOTTOM TAB DRIVE & IDLER END

## Drive Units (BT) DT2

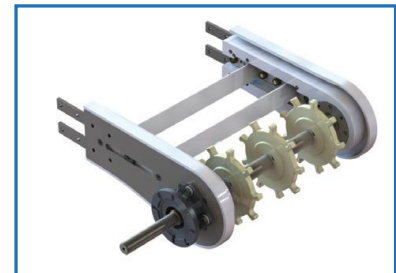


Example. Code for Basic unit;  
**DT2 DD R S47 BT** => Front drive unit for bottom tab chain, motor on right side for SEW SA47 gearmotor.

## Front Drive Unit

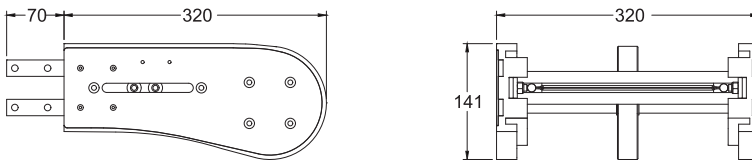


- Effective track length: 0.8m
- Traction force: 1500N
- Connecting strip and M8 hex screw included.
- Built in with CIS

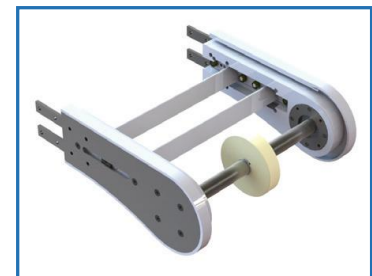


Item Code	Description	Weight	Supply
DT2 DD R/L S/T BT	Basic drive unit	9.4 kg	1 unit

## Idler Unit (BT) DT2



- Effective track length: 0.8m
- Connecting strip and M8 hex screw included.
- Built in with CIS



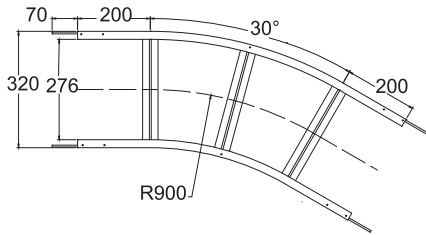
Item Code	Description	Weight	Supply
DT2 IE 320 BT	Basic idler unit	8.3 kg	1 unit

Please consult MODU representative for further information and assistance.

Units: Dimension (mm)

## MODU DT2 SERIES - BOTTOM TAB PLAIN BEND

### Horizontal Plain Bend (BT) DT2

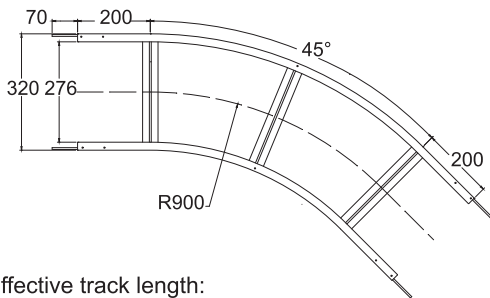


Effective track length:  
R900: 0.87m 1-way (1.74m 2-way)

#### Horizontal Plain Bend, 30°

Item Code	Radius (R)	Weight	Supply
DT2 BP 30R900 BT	900 mm	7.2 kg	1 unit

Tolerance:  $\pm 2^\circ$  & Radius:  $\pm 10$ mm  
- Connecting strip and M8 hex screw included.

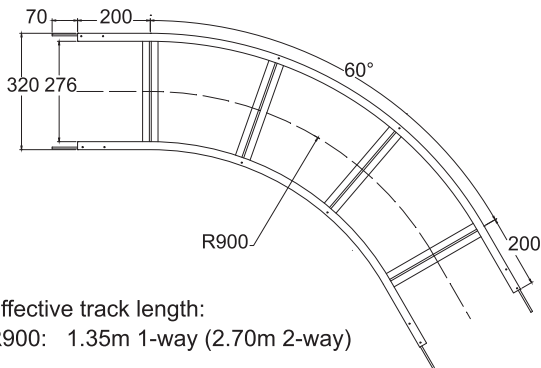


Effective track length:  
R900: 1.11m 1-way (2.22m 2-way)

#### Horizontal Plain Bend, 45°

Item Code	Radius (R)	Weight	Supply
DT2 BP 45R900 BT	900 mm	8.3 kg	1 unit

Tolerance:  $\pm 2^\circ$  & Radius:  $\pm 10$ mm  
- Connecting strip and M8 hex screw included.

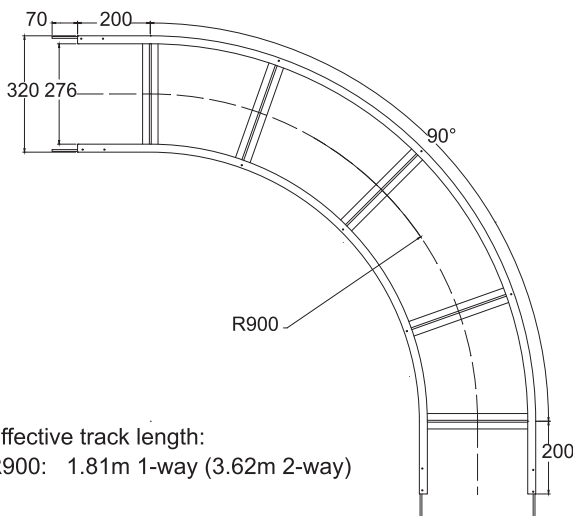


Effective track length:  
R900: 1.35m 1-way (2.70m 2-way)

#### Horizontal Plain Bend, 60°

Item Code	Radius (R)	Weight	Supply
DT2 BP 60R900 BT	900 mm	10.2 kg	1 unit

Tolerance:  $\pm 2^\circ$  & Radius:  $\pm 10$ mm  
- Connecting strip and M8 hex screw included.



Effective track length:  
R900: 1.81m 1-way (3.62m 2-way)

#### Horizontal Plain Bend, 90°

Item Code	Radius (R)	Weight	Supply
DT2 BP 90R900 BT	900 mm	14.2 kg	1 unit

Tolerance:  $\pm 2^\circ$  & Radius:  $\pm 10$ mm  
- Connecting strip and M8 hex screw included.

Please consult MODU representative for further information and assistance.

Units: Dimension (mm)