

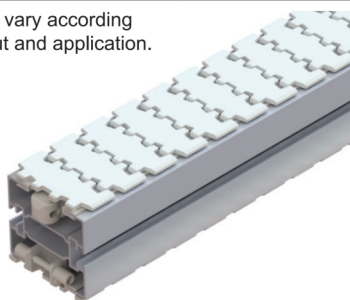
MODU MM3 CONVEYOR SERIES

- AP
- TR
- MP
- MS3
- MM3**
- ML2
- MX2
- MT2
- MR2
- MF2
- MPP
- MM3P
- ML2P
- MDP
- MG
- MB
- MA
- DS3
- DM3
- DL2
- DX2
- DT2
- DR2
- DF2
- DG
- DB
- DA
- SD
- SE
- TL
- IM
- MM

Technical Characteristics

Chain Width	83 mm
Chain Pitch	33.5 mm
Chain Weight	1.3 kg/m
Chain Working Tension (Max) With Wheel Bend Without Wheel Bend	800 N 1000 N
Max Product Weight* Horizontal Transport Vertical Transport	15.0 kg 10.0 kg
Total Load*	250 kg
Working Temperature*	-10°C to 60°C
Max Conveyor Length*	30 m
Max speed*	50 m/min
Drive Unit Capacity	1000 N
Item Width*	20 - 200 mm

* Actual limit may vary according to conveyor layout and application.

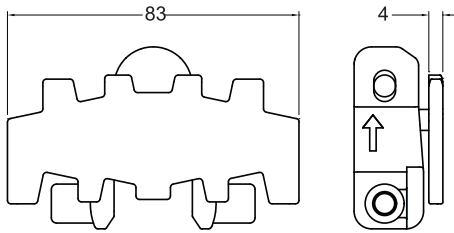


Chain Width 83mm

Contents

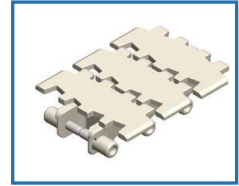
Chain MM3	64	Horizontal Wheel Bend MM3	75
Chain Top Replacement MM3	66	Horizontal Plain Bend MM3	76
Chain Accessories MM3	67	Vertical Bend MM3	77
Drive Units MM3	68	Chain Installation Section MM3	79
Idler End MM3	73	Diagonal Beam MM3	79
Conveyor Beam MM3	74	Wrap Beam MM3	79
Accessories MM3	74	Gripper System MM3	80

Chain MM3

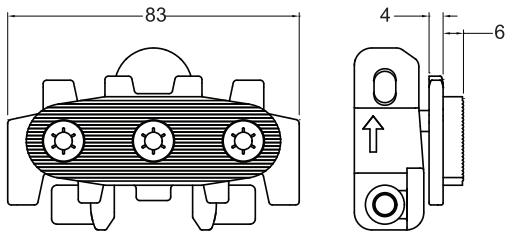


Plain Chain

- Suitable for conveyor configuration with incline/decline up to 7°.
- Accumulation possible.

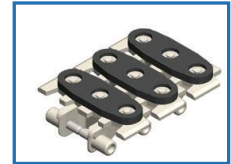


Item Code	Material	Color	Weight	Supply
MM3 CP 5	POM	White	6.5 kg/roll	5m/roll
MM3 CP 5A	Anti-Static	Yellow	6.5 kg/roll	5m/roll
MM3 CP 5K	Kevlar	Yellow	8.0 kg/roll	5m/roll

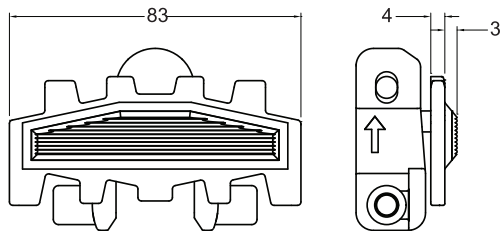


Insert Friction Chain

- Suitable for conveyor configuration with incline/decline up to 25°.
- Friction material : TPE (grey).
- Accumulation not possible

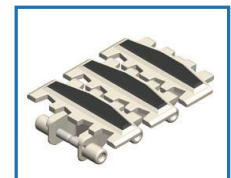


Item Code	Material	Color	Weight	Supply
MM3 CF 5	POM	White	7.5 kg/roll	5m/roll
MM3 CF 5A	Anti-Static	Yellow	7.5 kg/roll	5m/roll
MM3 CF 5K	Kevlar	Yellow	9.5 kg/roll	5m/roll

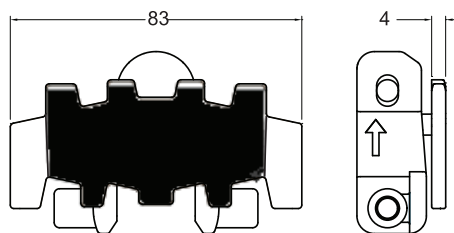


Molded Friction Chain

- Suitable for conveyor configuration with incline/decline up to 25°.
- Friction material : TPE (grey).
- Accumulation not possible
- PP chain working material tension = 500N



Item Code	Material	Color	Weight	Supply
MM3 CF 5P	PP	White	6.8 kg/roll	5m/roll



Flocked Chain

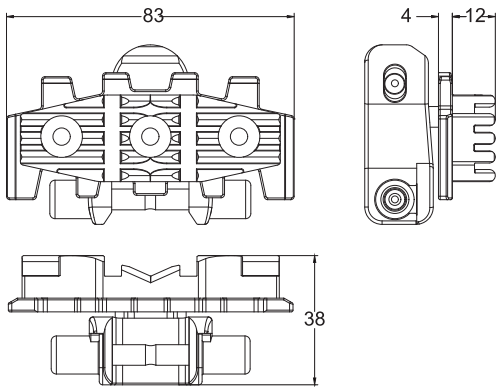
- Suitable for scratch sensitive material.
- Flock colour : Black
- Accumulation possible for light product only.
- Sticker type only



Item Code	Material	Color	Weight	Supply
MM3 CL 5	POM	White	7.0 kg/roll	5m/roll

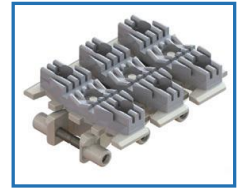
Please consult MODU representative for further information and assistance.

Units: Dimension (mm)

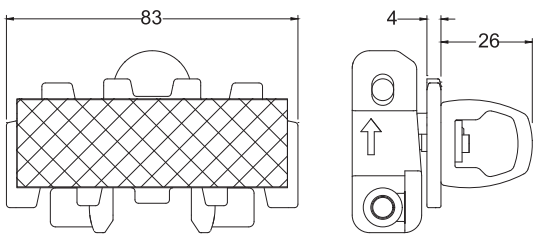


Silicone Pad Friction Chain

- High friction for incline of cylindrical product up to 40°
- Accumulation not possible.
- Not suitable to use with Combined Drive

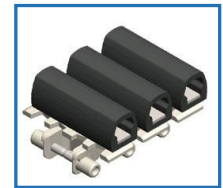


Item Code	Material	Color	Weight	Supply
MM3 CF 3S	POM	White	5.4 kg/roll	3m/roll
MM3 CF 3SA	Anti-Static	Yellow	5.4 kg/roll	3m/roll
MM3 CF 3SK	Kevlar	Yellow	7.2 kg/roll	3m/roll



Box Gripper Chain

- Suitable to be use for transferring product using gripper system.
- Accumulation not possible.
- Not suitable to use with Combined Drive



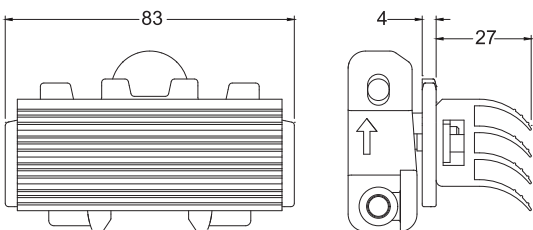
Indicator I Soft
II Medium
III Hard

Gripper Box	Max Product Weight
Soft Type – 50A Shore Hardness	up to 2 kg
Medium Type – 60A Shore Hardness	up to 5 kg
Hard Type – 73A Shore Hardness	up to 10 kg

Soft Type

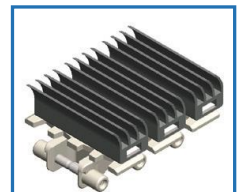
Item Code	Material	Color	Weight	Supply
MM3 CG 3BS	POM	White	7.7 kg/roll	3m/roll
MM3 CG 3BSA	Anti-Static	Yellow	7.7 kg/roll	3m/roll
MM3 CG 3BSK	Kevlar	Yellow	8.7 kg/roll	3m/roll

For other gripper box hardness, use the following item code:
Medium Type - MM3 CG 3BM
Hard Type - MM3 CG 3BH

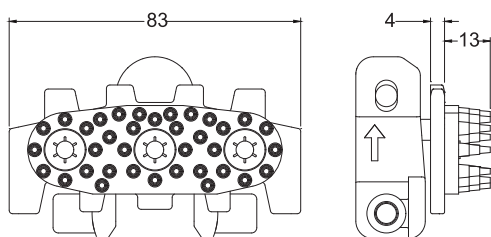


Wedge Gripper Chain

- Suitable to be use for transferring product using gripper system.
- Accumulation not possible.
- Not suitable to use with Combined Drive

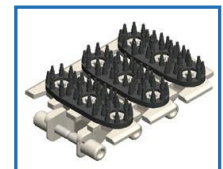


Item Code	Material	Color	Weight	Supply
MM3 CG 3W	POM	White	5.0 kg/roll	3m/roll
MM3 CG 3WA	Anti-Static	Yellow	5.0 kg/roll	3m/roll
MM3 CG 3WK	Kevlar	Yellow	6.7 kg/roll	3m/roll



Finger Gripper Chain

- Suitable to be use for transferring product using gripper system.
- Accumulation not possible.
- Not suitable to use with Combined Drive

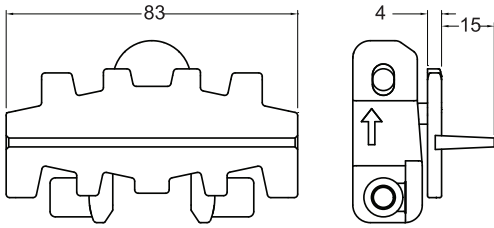


Item Code	Material	Color	Weight	Supply
MM3 CG 3F	POM	White	5.0 kg/roll	3m/roll
MM3 CG 3FA	Anti-Static	Yellow	5.0 kg/roll	3m/roll
MM3 CG 3FK	Kevlar	Yellow	6.0 kg/roll	3m/roll

Please consult MODU representative for further information and assistance.

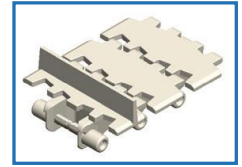
Units: Dimension (mm)

MODU MM3 SERIES - CHAIN



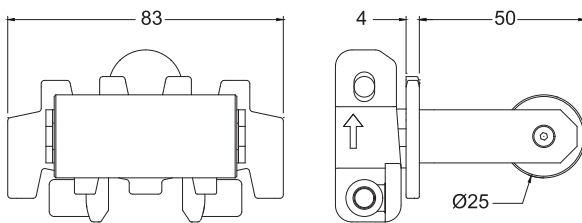
Cleated Link - Molded Cleated

- Required for vertical or steeply inclined / declined conveyor.
- Accumulation not possible.
- Not suitable to be use with Combined and Catenary Drive.
- Supply in pieces.



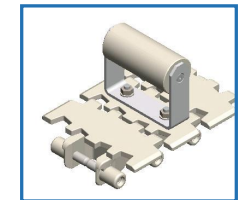
Item Code	Material	Color	Weight	Supply
MM3 CC 3X15 *P	POM	White	** kg/pc	1 pc
MM3 CC 3X15A *P	Anti-Static	Yellow	** kg/pc	1 pc
MM3 CC 3X15K *P	Kevlar	Yellow	** kg/pc	1 pc

*P
Please specify pitch between cleat for ordering
(eg. MM3 CC 3x15 3P ; 3P = Every 3rd link to be cleated).



Roller Cleated Link

- Required for vertical or steeply inclined / declined conveyor.
- Accumulation not possible.
- Not suitable to be use with Combined and Catenary Drive.
- Supply in pieces.

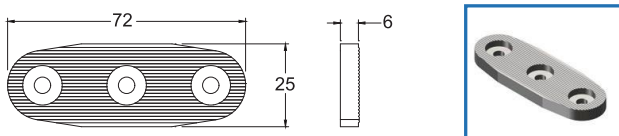


Item Code	Material	Color	Weight	Supply
MM3 CR 3X50 *P	POM	White	** kg/pc	1 pc

*P
Please specify pitch between cleat for ordering
(eg. MM3 CR 3x15 3P ; 3P = Every 3rd link to be cleated).

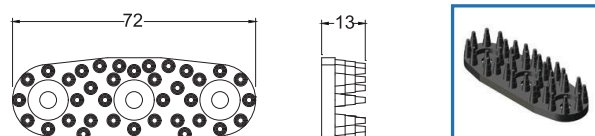
Chain Top Replacement MM3

Friction Pad



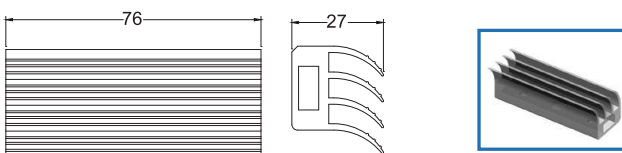
Item Code	Material	Color	Weight	Supply
MM3 FP 83	TPE	Grey	0.01 kg	10 pcs/pkt

Finger Gripper Pad



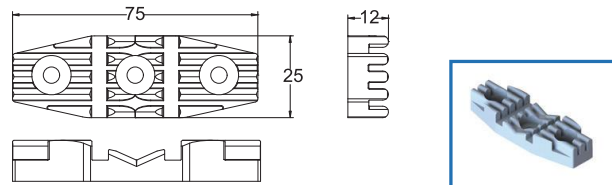
Item Code	Material	Color	Weight	Supply
MM3 GP 83F	TPU	Grey	0.09 kg	10 pcs/pkt

Wedge Gripper



Item Code	Material	Color	Weight	Supply
MM3 FP 83W	TPU	Grey	0.2 kg	10 pcs/pkt

Friction Silicone Pad



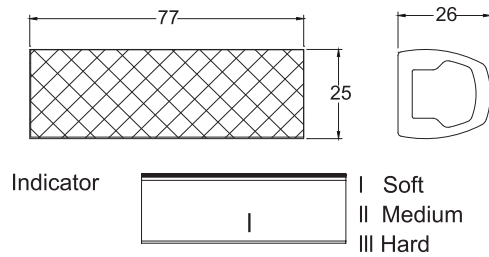
Item Code	Material	Color	Weight	Supply
MM3 FP 83S	Silicone	Grey	0.3 kg	10 pcs/pkt

Please consult MODU representative for further information and assistance.

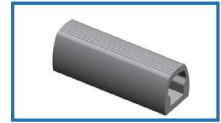
Units: Dimension (mm)

MODU MM3 SERIES - CHAIN

Gripper Box



- Box material : TPE (Grey).



Item Code	Hardness	Weight	Supply
MM3 GP 83 BS	Soft - 50A	0.2 kg	10 pcs/pkt
MM3 GP 83 BM	Medium - 60A	0.2 kg	10 pcs/pkt
MM3 GP 83 BH	Hard - 73A	0.2 kg	10 pcs/pkt

Chain Accessories MM3

Lubricant For Chain



Silicone-based lubricant,
400ml

Item Code	Weight	Supply
MA SL	0.35 kg/can	1 can

Stainless Steel Pin



Item Code	Weight	Supply
MM3 PN M6x53	0.07 kg	10 pcs / pkt

Chain Pivot



Item Code	Weight	Supply
MM3 PV	0.01 kg	10 pcs / pkt

Chain Pin Insertion Tool



Chain pin insertion tool
shown without attachment
and drive pin



Chain attachment and
drive pin

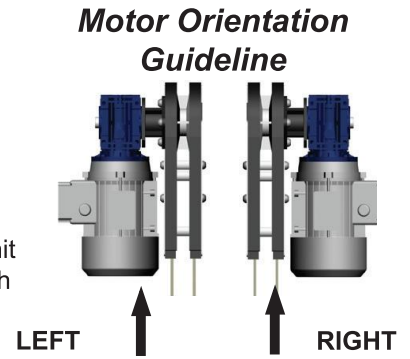
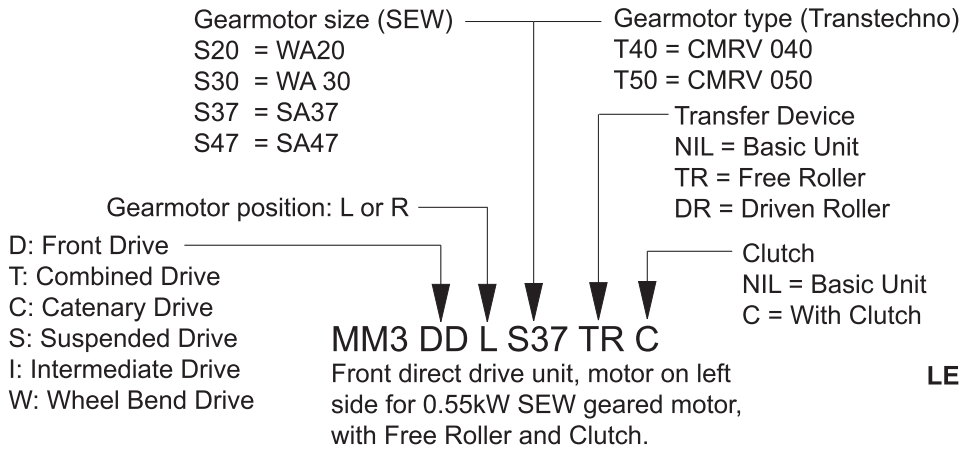
Item Code	Description	Weight	Supply
TR CP 1	Pin Insertion Tool	1.2 kg	1 pc
MM3 AC	Chain Attachment	0.2 kg	1 pc

Please consult MODU representative for further information and assistance.

Units: Dimension (mm)

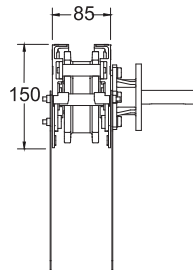
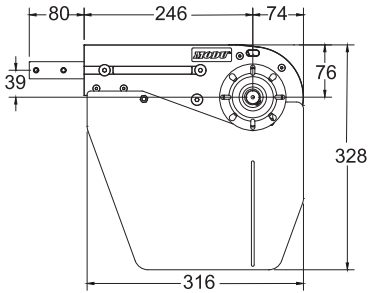
MODU MM3 SERIES - DRIVE UNITS

Drive Units MM3

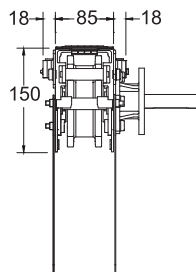
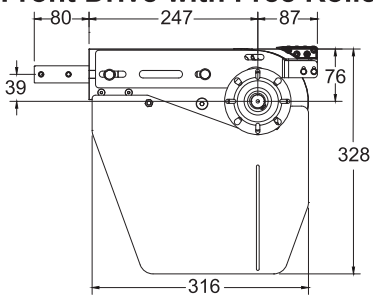


Front Drive Unit

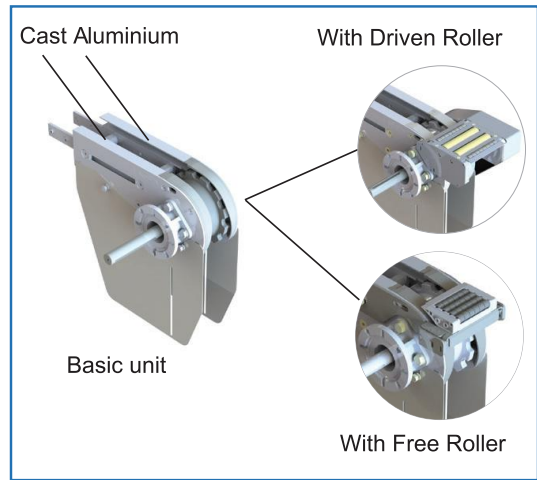
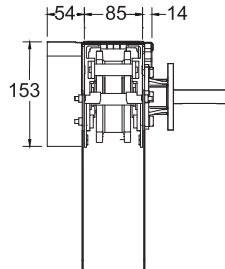
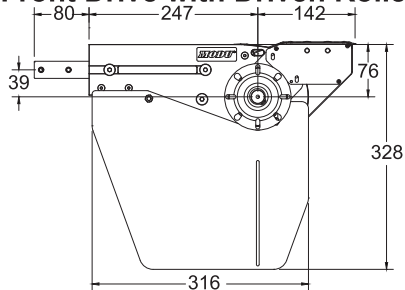
Basic Front Drive



Front Drive with Free Roller



Front Drive with Driven Roller



**Comes without safety cover

- Effective track length: 1.63m
 - Traction force: 1000N
 - Connecting strip and set screw included.
- Note:
- Safety Cover comes as an option.
 - Recommended maximum chain elongation is 328mm from top conveyor to chain slack.

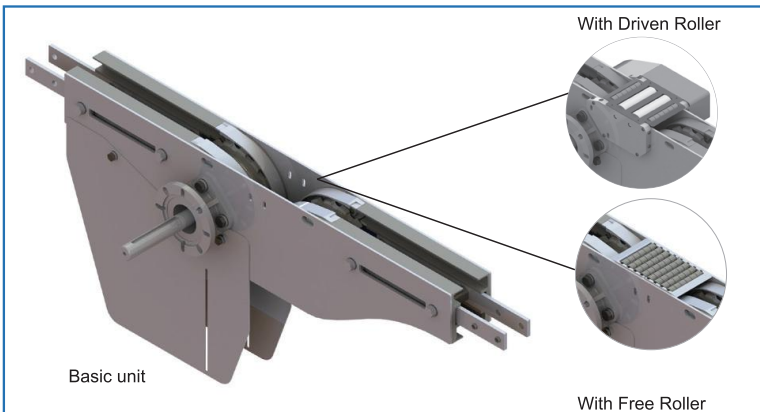
Item Code	Description	Weight	Supply
MM3 DD2 R/L S/T	Basic drive unit	4.9 kg	1 unit
MM3 DD2 R/L S/T TR	With transfer roller	5.1 kg	1 unit
MM3 DD2 R/L S/T DR	With driven roller	6.6 kg	1 unit

Driven Roller speed is approximately 10% higher than conveyor speed.

Please consult MODU representative for further information and assistance.

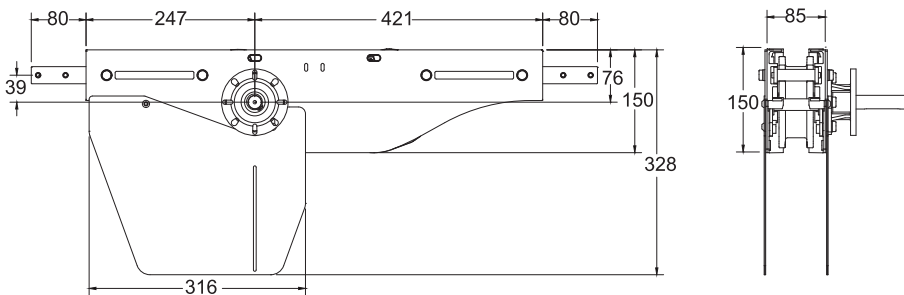
Units: Dimension (mm)

Combined Drive Unit

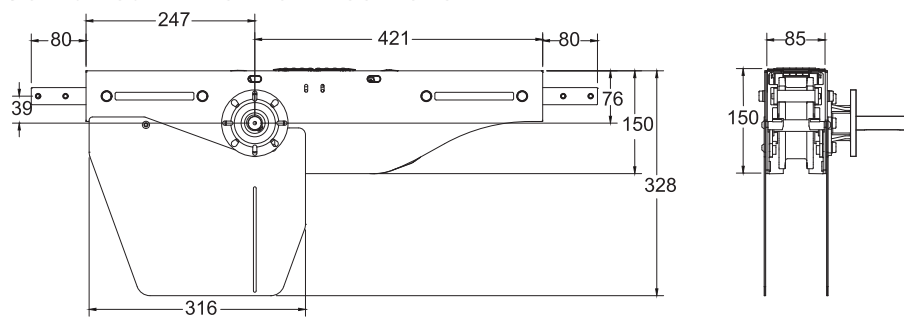


**Comes without safety cover

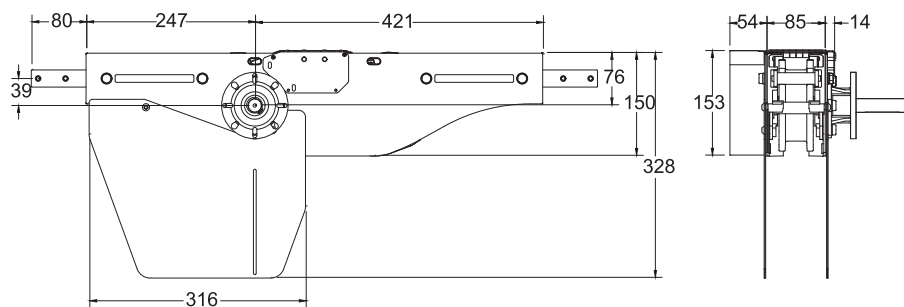
Basic Combined Drive



Combined Drive with Free Roller



Combined Drive with Driven Roller



Driven Roller speed is approximately 10% higher than conveyor speed.

Item Code	Description	Weight	Supply
MM3 DT R/L S/T	Basic drive unit	10.2 kg	1 unit
MM3 DT R/L S/T TR	With transfer roller	10.4 kg	1 unit
MM3 DT R/L S/T DR	With driven roller	11.9 kg	1 unit

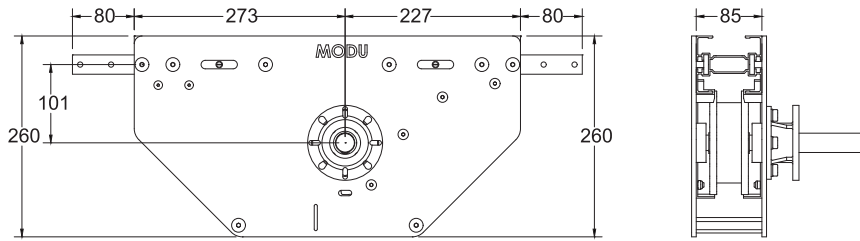
- Effective track length: 1.63m
 - Traction force: 1000N
 - Connecting strip and set screw included.
- Note:
- Safety Cover comes as an option.
 - Recommended maximum chain elongation is 328mm from top conveyor to chain slack.

Please consult MODU representative for further information and assistance.

Units: Dimension (mm)

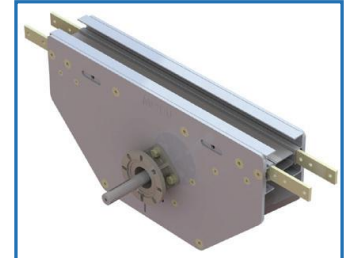
MODU MM3 SERIES - DRIVE UNITS

Intermediate Drive Unit

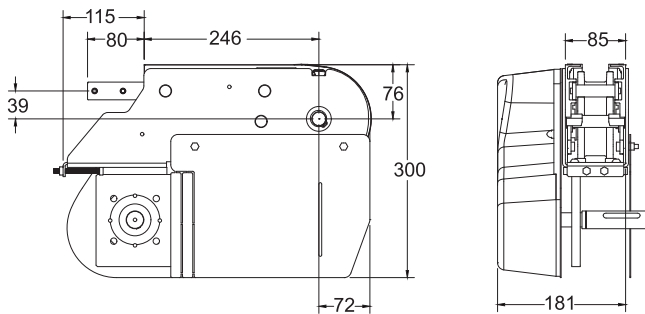


- Effective track length: 1.2m
- Traction force: 200N
- Horizontal use only
- Connecting strip and set screw included.

Item Code	Weight	Supply
MM3 DI R/L S/T	13.0 kg	1 unit

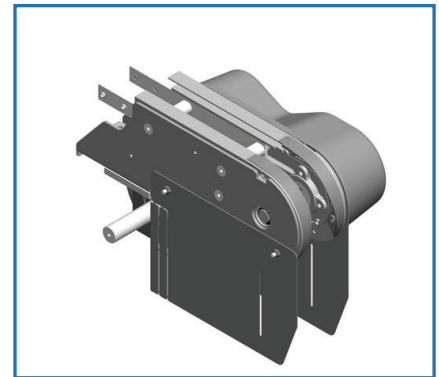


Suspended Drive Unit

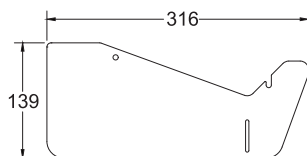


- Effective track length: 0.82m
- Traction force: 1000N
- Connecting strip and set screw included.

Item Code	Description	Weight	Supply
MM3 DS R/L S/T	Without clutch	14.5 kg	1 unit
MM3 DS R/L S/T C	With clutch	15.5 kg	1 unit



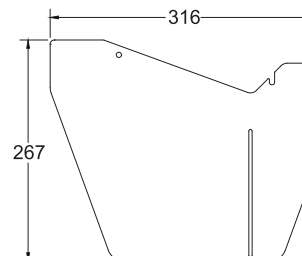
Short Safety Cover



Material : Stainless Steel

Item Code	Weight	Supply
SC2 139	0.8 kg	2 pcs/set

Standard Safety Cover



Material :
Stainless Steel

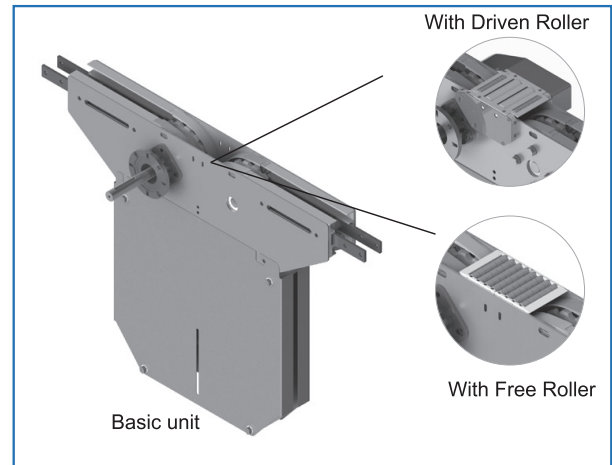
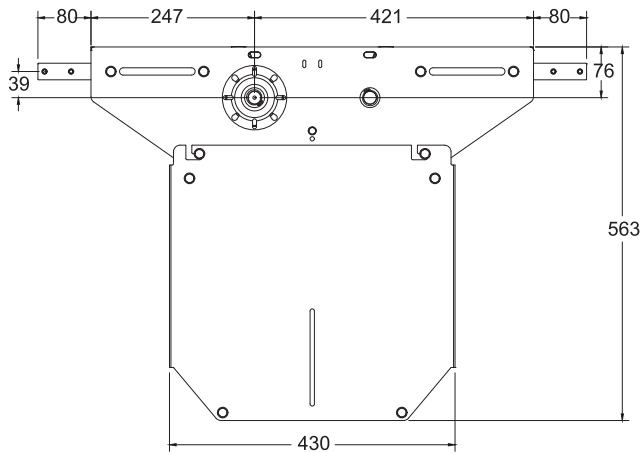
Item Code	Weight	Supply
SC2 267	0.8 kg	2 pcs/set

Please consult MODU representative for further information and assistance.

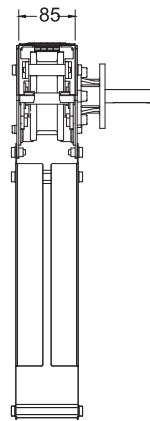
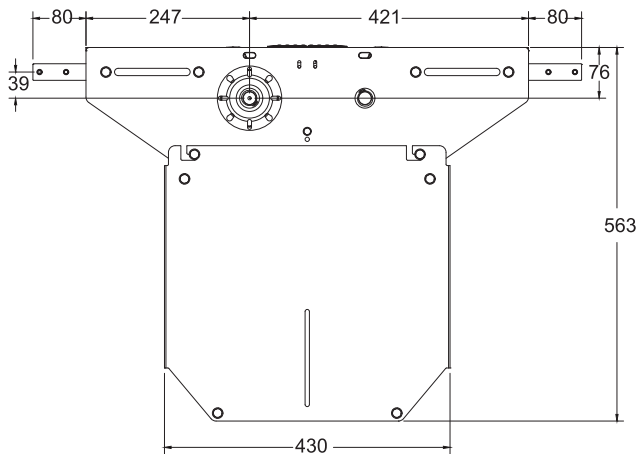
Units: Dimension (mm)

Catenary Drive Unit

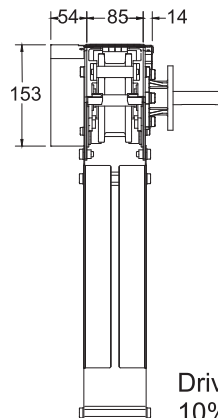
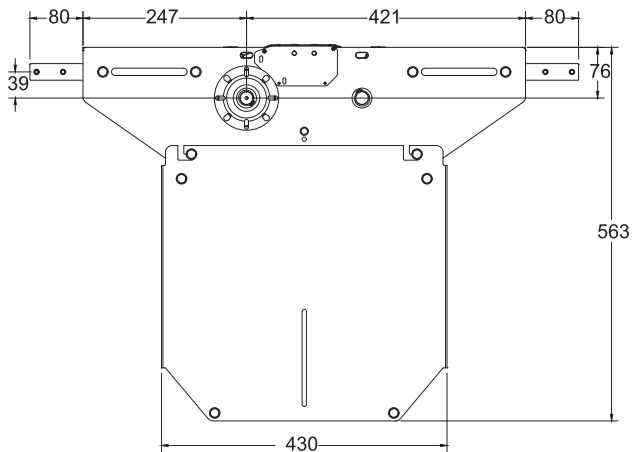
Basic Catenary Drive Unit



Catenary Drive with Free Roller



Catenary Drive with Driven Roller



Driven Roller speed is approximately 10% higher than conveyor speed.

Item Code	Description	Weight	Supply
MM3 DC R/L S/T	Basic drive unit	18.9 kg	1 unit
MM3 DC R/L S/T TR	With transfer roller	19.1 kg	1 unit
MM3 DC R/L S/T DR	With driven roller	20.6 kg	1 unit

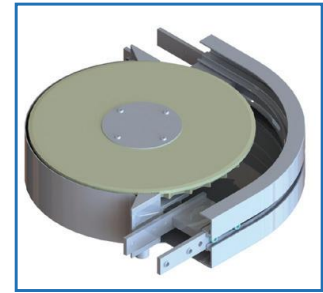
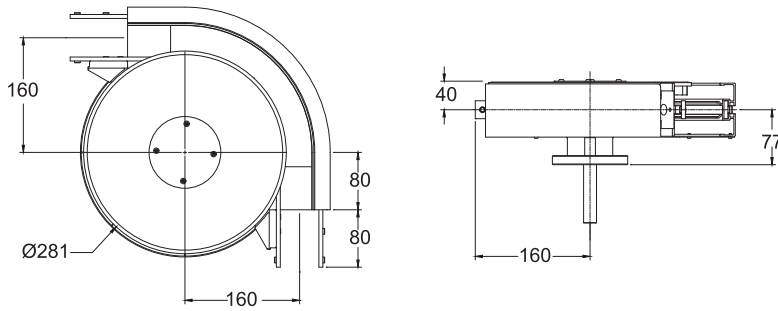
- Effective track length: 1.66m
- Traction force: 500N
- Connecting strip and set screw included.

Please consult MODU representative for further information and assistance.

Units: Dimension (mm)

MODU MM3 SERIES - DRIVE UNITS

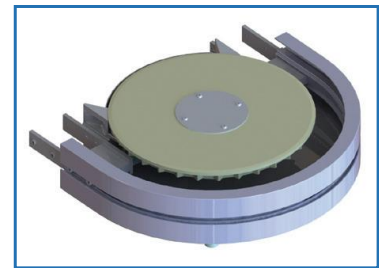
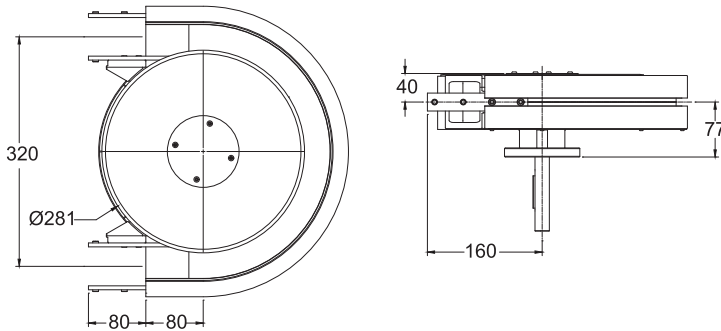
90° Wheel Bend Drive Unit



Item Code	Weight	Supply
MM3 DW 90R160 S/T	8.0 kg	1 unit

- Effective track length: 0.41m
- Traction force: 200N
- Connecting strip and set screw included.

180° Wheel Bend Drive Unit

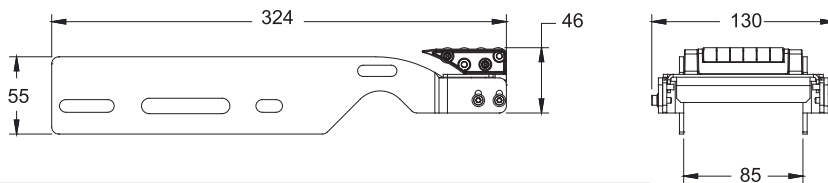


Item Code	Weight	Supply
MM3 DW 180R160 S/T	8.0 kg	1 unit

- Effective track length: 0.82m
- Traction force: 200N
- Connecting strip and set screw included.

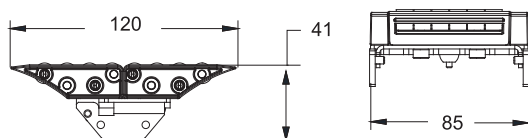
Free Transfer Roller

Direct Drive Unit



Item Code	Weight	Supply
MM3 TR DD/IE	0.85 kg	1 unit

Combined Drive Unit

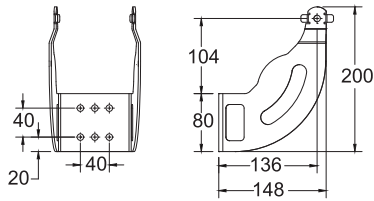


Item Code	Weight	Supply
MM3 TR DT	0.25 kg	1 unit

Please consult MODU representative for further information and assistance.

Units: Dimension (mm)

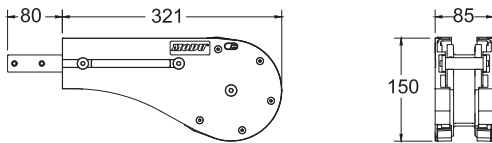
Support Bracket for Drive Unit



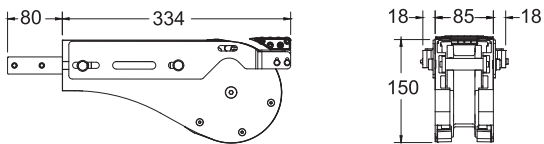
Item Code	Weight	Supply
MM3 BD	1.0 kg	1 unit

Idler End MM3

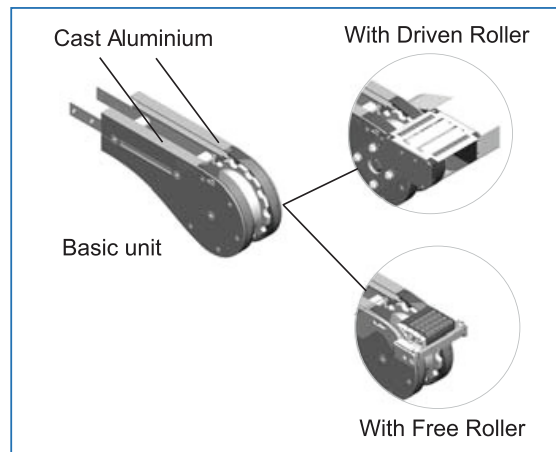
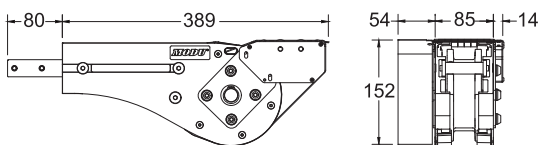
Basic Idler End Unit



Idler End Unit with Free Roller



Idler End Unit with Driven Roller



Driven Roller speed is approximately 10% higher than conveyor speed.

- Effective track length: 0.8m
- Connecting strip and set screw included.

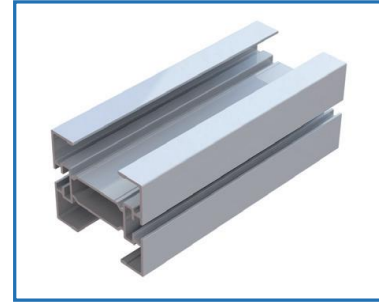
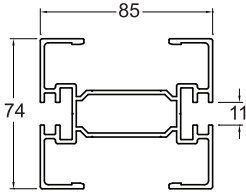
Item Code	Description	Weight	Supply
MM3 IE2 320	Basic idler unit	2.6 kg	1 unit
MM3 IE2 320 TR	With transfer roller	2.8 kg	1 unit
MM3 IE2 320 DR L/R	With driven roller	4.1 kg	1 unit

Please consult MODU representative for further information and assistance.

Units: Dimension (mm)

MODU MM3 SERIES - BEAM AND ACCESSORIES

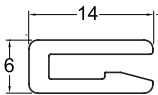
Conveyor Beam MM3



Item Code	Weight	Supply
MM3 CB 3	7.6 kg	3m / beam

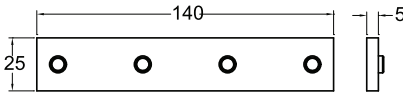
Accessories MM3

Slide Rail



Item Code	Material	Color	Weight	Supply
MS SR 25	HDPE	Semi-Transparent White	1.2 kg	25m/roll
MS SR 25A	Anti-Static	Grey	1.2 kg	25m/roll

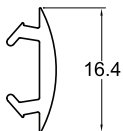
Connecting Strip



- 4 pcs M8 set screw included.

Item Code	Weight	Supply
MA CS 25x140	1.1 kg	10 pcs/pkt

T-Slot Cover



Item Code	Material	Color	Weight	Supply
MB SC 25T	TPE	Grey	1.5 kg	25m/roll
MB SC 25P	PVC	Light Grey	1.3 kg	25m/roll

Rivet



Item Code	Weight	Supply
MA RR 3	0.02 kg	50 pcs/pkt

Rivet Crimping



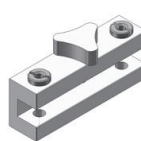
Item Code	Weight	Supply
MA RC	0.13 kg	1 pc

Slide Rail Mounting Tool



Item Code	Weight	Supply
MM3 SRA	0.4 kg	1 pc

Slide Rail Drill Fixture



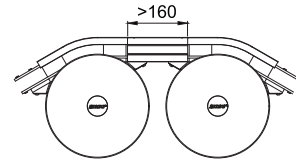
Item Code	Weight	Supply
MA SRF	0.24 kg	1 pc

Please consult MODU representative for further information and assistance.

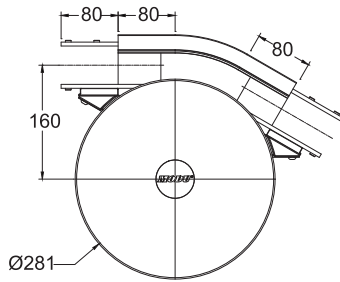
Units: Dimension (mm)

MODU MM3 SERIES - HORIZONTAL WHEEL BEND

Horizontal Wheel Bend MM3



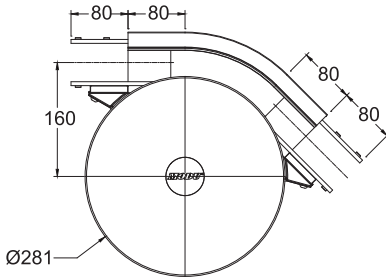
Minimum straight section for all wheel bend connection.



Wheel Bend, 30°

Effective track length:
0.24m 1-way (0.48 m 2-way)
- Tolerance: $\pm 2^\circ$ & Radius: ± 10 mm
- Connecting strip and set screw included.

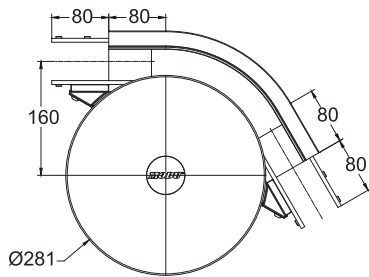
Item Code	Weight	Supply
MM3 BW 30R160	6.0 kg	1 unit



Wheel Bend, 45°

Effective track length:
0.28m 1-way (0.56m 2-way)
- Tolerance: $\pm 2^\circ$ & Radius: ± 10 mm
- Connecting strip and set screw included.

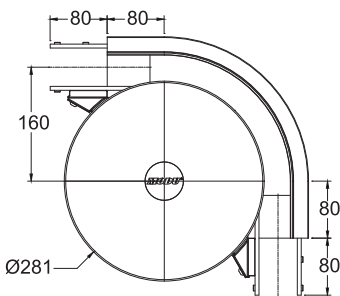
Item Code	Weight	Supply
MM3 BW 45R160	6.0 kg	1 unit



Wheel Bend, 60°

Effective track length:
0.33m 1-way (0.66 m 2-way)
- Tolerance: $\pm 2^\circ$ & Radius: ± 10 mm
- Connecting strip and set screw included.

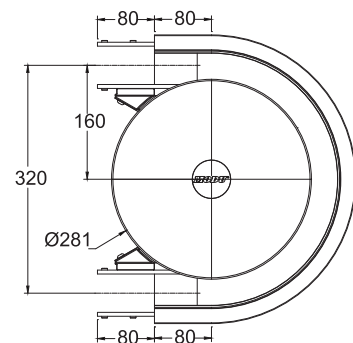
Item Code	Weight	Supply
MM3 BW 60R160	6.1 kg	1 unit



Wheel Bend, 90°

Effective track length:
0.41m 1-way (0.82m 2-way)
- Tolerance: $\pm 2^\circ$ & Radius: ± 10 mm
- Connecting strip and set screw included.

Item Code	Weight	Supply
MM3 BW 90R160	6.1 kg	1 unit



Wheel Bend, 180°

Effective track length:
0.66m 1-way (1.32 m 2-way).
- Tolerance: $\pm 2^\circ$ & Radius: ± 10 mm
- Connecting strip and set screw included.

Item Code	Weight	Supply
MM3 BW 180R160	6.2 kg	1 unit

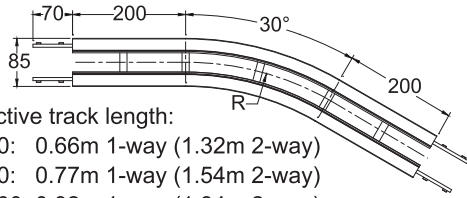
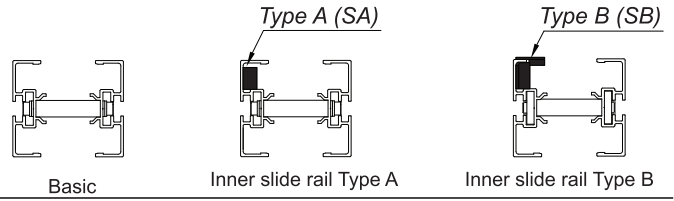
Please consult MODU representative for further information and assistance.

Units: Dimension (mm)

MODU MM3 SERIES - HORIZONTAL PLAIN BEND

Horizontal Plain Bend MM3

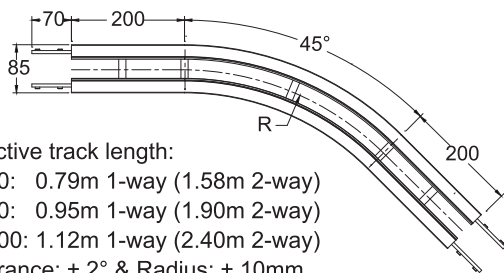
Plain bends comes with options for optimum usage
 -Plain bend basic unit.
 -Plain bend with inner slide rail Type A (SA), Material = PE.
 -Plain bend with inner slide rail Type B (SB), Material = Nylon
 *(SB) is recommended when conveyor speed is 30m/min and above



Effective track length:
 R500: 0.66m 1-way (1.32m 2-way)
 R700: 0.77m 1-way (1.54m 2-way)
 R1000: 0.92m 1-way (1.84m 2-way).
 Tolerance: $\pm 2^\circ$ & Radius: $\pm 10\text{mm}$
 - Connecting strip and set screw included.

Horizontal Plain Bend, 30°

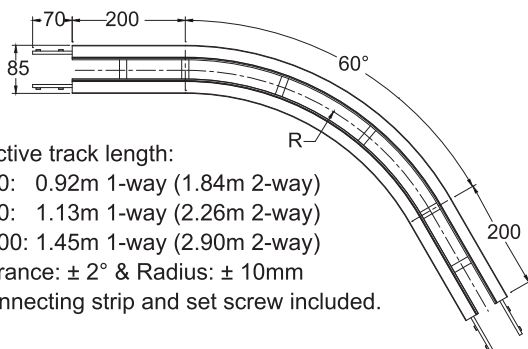
Item Code	Radius (R)	Weight	Supply
MM3 BP 30R500	500 mm	2.3 kg	1 unit
MM3 BP 30R700	700 mm	2.6 kg	1 unit
MM3 BP 30R1000	1000 mm	2.9 kg	1 unit



Effective track length:
 R500: 0.79m 1-way (1.58m 2-way)
 R700: 0.95m 1-way (1.90m 2-way)
 R1000: 1.12m 1-way (2.40m 2-way)
 Tolerance: $\pm 2^\circ$ & Radius: $\pm 10\text{mm}$
 - Connecting strip and set screw included.

Horizontal Plain Bend, 45°

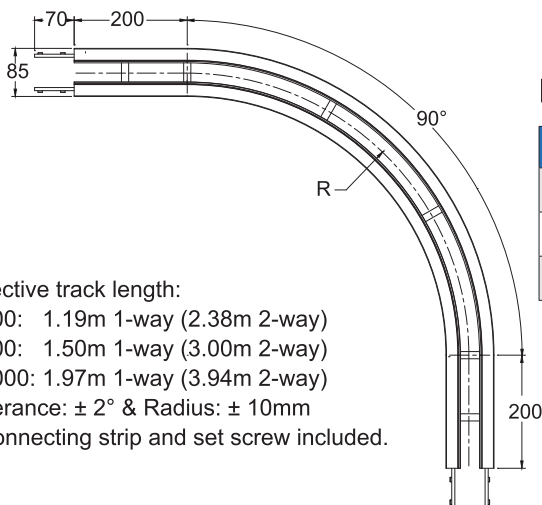
Item Code	Radius (R)	Weight	Supply
MM3 BP 45R500	500 mm	2.6 kg	1 unit
MM3 BP 45R700	700 mm	3.0 kg	1 unit
MM3 BP 45R1000	1000 mm	3.3 kg	1 unit



Effective track length:
 R500: 0.92m 1-way (1.84m 2-way)
 R700: 1.13m 1-way (2.26m 2-way)
 R1000: 1.45m 1-way (2.90m 2-way)
 Tolerance: $\pm 2^\circ$ & Radius: $\pm 10\text{mm}$
 - Connecting strip and set screw included.

Horizontal Plain Bend, 60°

Item Code	Radius (R)	Weight	Supply
MM3 BP 60R500	500 mm	2.9 kg	1 unit
MM3 BP 60R700	700 mm	3.5 kg	1 unit
MM3 BP 60R1000	1000 mm	4.2 kg	1 unit



Effective track length:
 R500: 1.19m 1-way (2.38m 2-way)
 R700: 1.50m 1-way (3.00m 2-way)
 R1000: 1.97m 1-way (3.94m 2-way)
 Tolerance: $\pm 2^\circ$ & Radius: $\pm 10\text{mm}$
 - Connecting strip and set screw included.

Horizontal Plain Bend, 90°

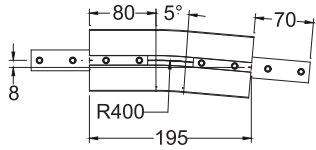
Item Code	Radius (R)	Weight	Supply
MM3 BP 90R500	500 mm	3.6 kg	1 unit
MM3 BP 90R700	700 mm	4.4 kg	1 unit
MM3 BP 90R1000	1000 mm	5.6 kg	1 unit

When ordering plain bends with inner slide rail, please specify the type using the following part number as an example.
 Type A - MM3 BP 30R500 SA
 Type B - MM3 BP 90R500 SB

Please consult MODU representative for further information and assistance.

Units: Dimension (mm)

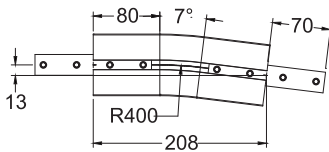
Vertical Bend MM3



Vertical Bend, 5°

Effective track length:
 R400: 0.19m 1-way (0.38m 2-way)
 - Tolerance: $\pm 2^\circ$ & Radius: ± 10 mm
 - Connecting strip and set screw included.

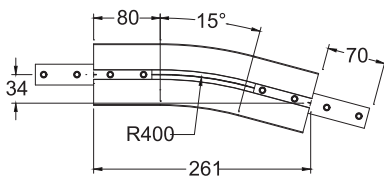
Item Code	Weight	Supply
MM3 BV 5R400	1.0 kg	1 unit



Vertical Bend, 7°

Effective track length:
 R400: 0.20m 1-way (0.40m 2-way)
 - Tolerance: $\pm 2^\circ$ & Radius: ± 10 mm
 - Connecting strip and set screw included.

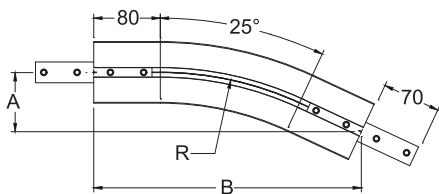
Item Code	Weight	Supply
MM3 BV 7R400	1.1 kg	1 unit



Vertical Bend, 15°

Effective track length:
 R400: 0.26m 1-way (0.52m 2-way)
 - Tolerance: $\pm 2^\circ$ & Radius: ± 10 mm
 - Connecting strip and set screw included.

Item Code	Weight	Supply
MM3 BV 15R400	1.2 kg	1 unit

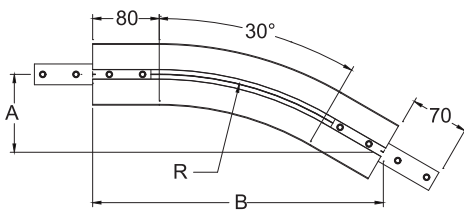


Vertical Bend, 25°

Effective track length:
 R400: 0.33m 1-way (0.66m 2-way)
 R1000: 0.60m 1-way (1.20m 2-way)
 - Tolerance: $\pm 2^\circ$ & Radius: ± 10 mm
 - Connecting strip and set screw included.

Item Code	Weight	Supply
MM3 BV 25R400	1.4 kg	1 unit
MM3 BV 25R1000	2.0 kg	1 unit

R400 : A = 71mm ; B = 322 mm
 R1000 : A = 128mm ; B = 575 mm



Vertical Bend, 30°

Effective track length:
 R400: 0.37m 1-way (0.74m 2-way)
 R1000: 0.68m 1-way (1.36m 2-way)
 - Tolerance: $\pm 2^\circ$ & Radius: ± 10 mm
 - Connecting strip and set screw included.

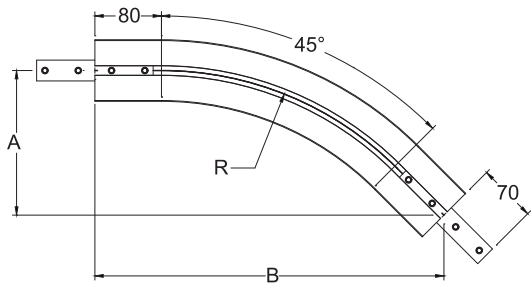
Item Code	Weight	Supply
MM3 BV 30R400	1.3 kg	1 unit
MM3 BV 30R1000	2.5 kg	1 unit

R400 : A = 80mm ; B = 299 mm
 R1000 : A = 174mm ; B = 649 mm

Please consult MODU representative for further information and assistance.

Units: Dimension (mm)

MODU MM3 SERIES - VERTICAL BEND



R400 : A = 174mm ; B = 419 mm
R1000 : A = 350mm ; B = 844 mm

Vertical Bend, 45°

Effective track length:

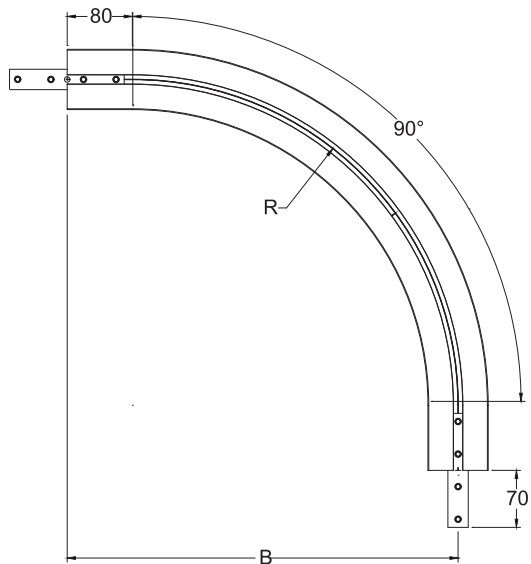
R400: 0.47m 1-way (0.94m 2-way)

R1000: 0.95m 1-way (1.90m 2-way)

- Tolerance: $\pm 2^\circ$ & Radius: $\pm 10\text{mm}$

- Connecting strip and set screw included.

Item Code	Weight	Supply
MM3 BV 45R400	1.7 kg	1 unit
MM3 BV 45R1000	3.0 kg	1 unit



R400 : B = 480 mm
R1000 : B = 1180 mm

Vertical Bend, 90°

Effective track length:

R400: 0.63m 1-way (1.26m 2-way)

R1000: 1.73m 1-way (3.46m 2-way)

- Tolerance: $\pm 2^\circ$ & Radius: $\pm 10\text{mm}$

- Connecting strip and set screw included.

Item Code	Weight	Supply
MM3 BV 90R400	2.5 kg	1 unit
MM3 BV 90R1000	5.0 kg	1 unit

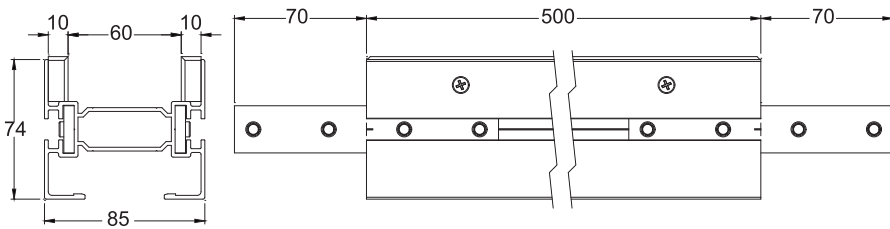
Non-Standard Vertical Bend is available in PE with minimum radius of 400mm.

Please consult MODU representative for further information and assistance.

Units: Dimension (mm)

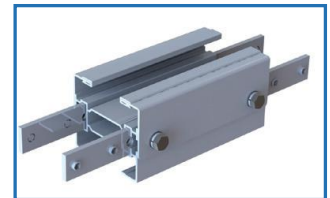
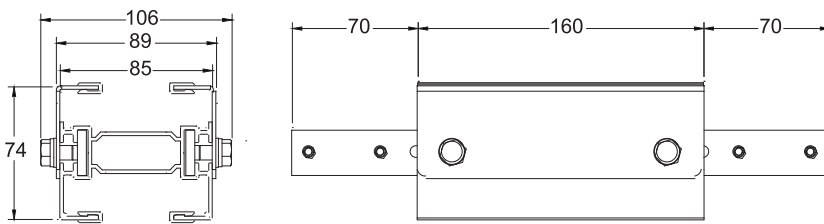
MODU MM3 SERIES - COMPONENTS

Chain Installation Section MM3



Item Code	Weight	Supply
MM3 LU 500	1.9 kg	1 unit

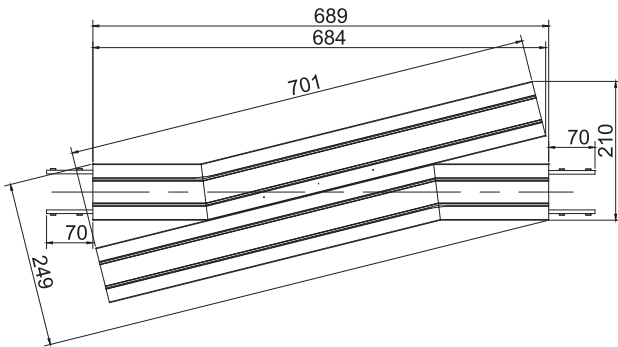
- Connecting strip and set screw included.



Item Code	Weight	Supply
MM3 CIS 160	1.3 kg	1 unit

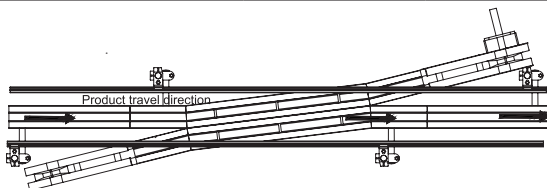
**Stainless steel side plate available on request

Diagonal Beam MM3

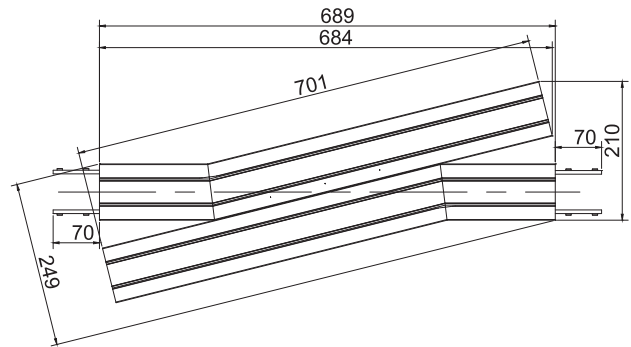


- A combination drive and idler unit used for smooth transferring of unstable products between conveyors.
- All available standard drives fit this unit.
- Please indicate the drive unit type when placing an order.

Item Code	Weight	Supply
MM3 BXD	14.8 kg	1 unit

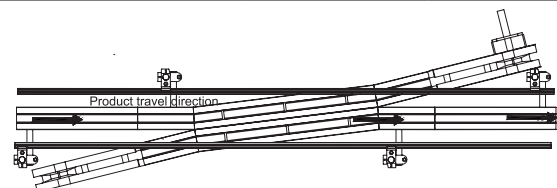


Wrap Beam MM3



- Wrap drive is used for smooth power transfer on top running chain conveyors. An excellent product for multi drive alpine system.
- All available standard drives fit this unit.
- Please indicate the drive unit type when placing an order.

Item Code	Weight	Supply
MM3 BXW	16.2 kg	1 unit



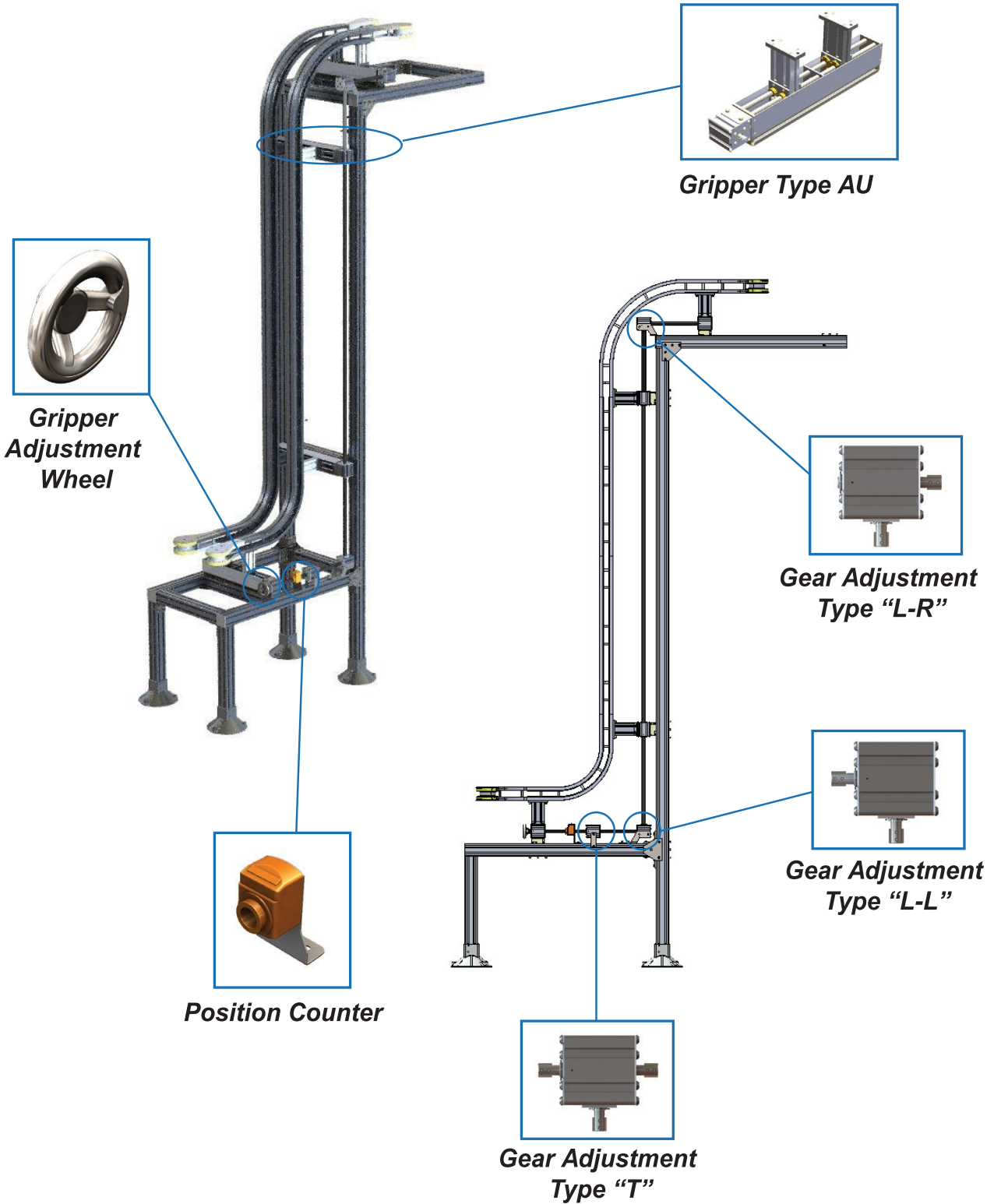
Please consult MODU representative for further information and assistance.

Units: Dimension (mm)

Gripper System MM3

Gripper S-Flow type (Configuration)

S-Flow Gripper

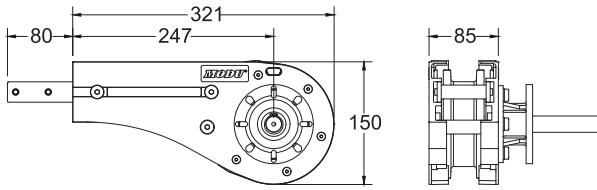


Please consult MODU representative for further information and assistance.

Units: Dimension (mm)

MODU MM3 SERIES - GRIPPER SYSTEM

Gripper Drive Unit

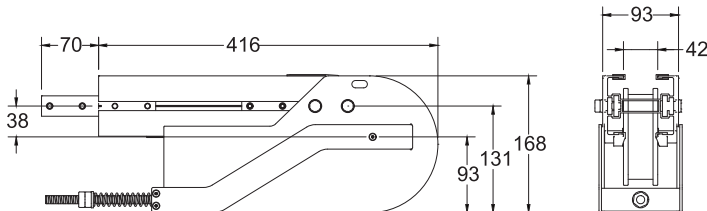


- Effective track length: 0.82m
- Traction force: 1000N
- Connecting strip and set screw included.

Item Code	Weight	Supply
MM3 DG R/L S/T	5.4 kg	1 unit



Gripper Idler End

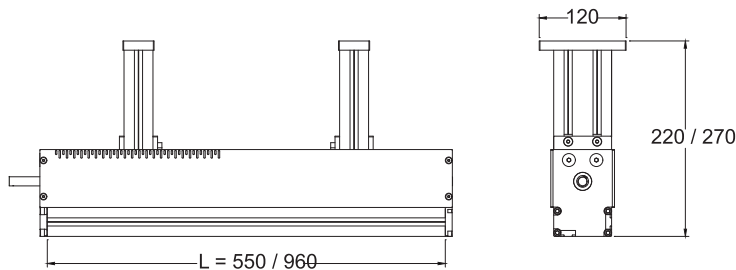


- Effective track length: 0.82 m
- Connecting strip and set screw included.

Item Code	Weight	Supply
MM3 IG 400	5.4 kg	1 unit



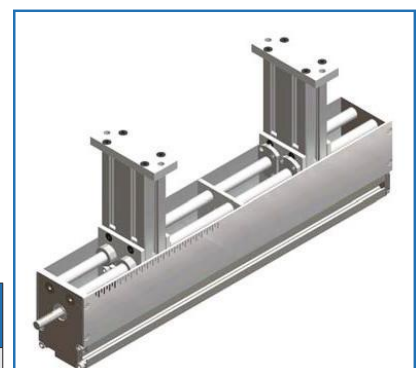
Gripper Adjustment Unit



Item Code	Product Size		Weight	Supply
	Width	Height		
MA AU2 550x220	50-300 mm	90-200 mm	9.0 kg	1 unit
MA AU2 550x270	50-300 mm	90-300 mm	9.5 kg	1 unit
MA AU2 960x220	100-700 mm	90-200 mm	13.0 kg	1 unit
MA AU2 960x270	100-700 mm	90-300 mm	13.5 kg	1 unit

**improved

- Lighter, more rigid and easier to rotate.

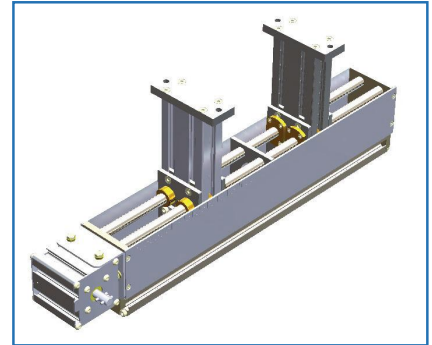
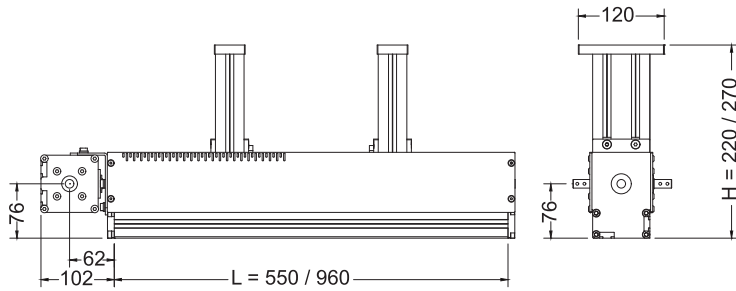


Please consult MODU representative for further information and assistance.

Units: Dimension (mm)

MODU MM3 SERIES - GRIPPER SYSTEM

Gripper Adjustment Unit with Gear

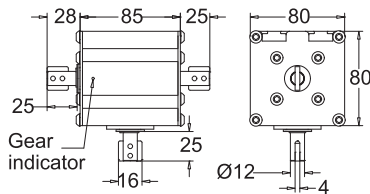


Item Code	Product Size Width	Product Size Height	Weight	Supply
MA AU2 550x220-BG	50-300 mm	90-200 mm	9.0 kg	1 unit
MA AU2 550x270-BG	50-300 mm	90-300 mm	9.5 kg	1 unit
MA AU2 960x220-BG	100-700 mm	90-200 mm	13.0 kg	1 unit
MA AU2 960x270-BG	100-700 mm	90-300 mm	13.5 kg	1 unit

**improved

- Lighter, rigid and easier to rotate.

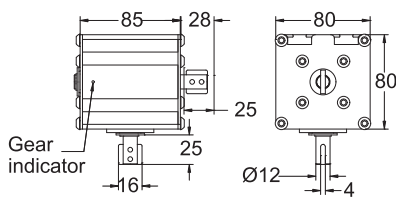
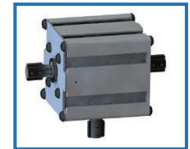
Bevel Gears for Gripper Unit



'T'

- Clockwise + Clockwise + Counter Clockwise

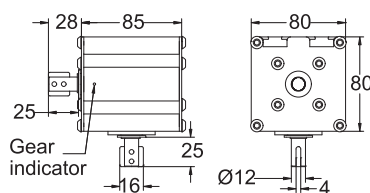
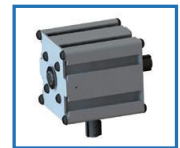
Item Code	Weight	Supply
MA BG T	1.09 kg	1 unit



'L - R'

- Clockwise + Clockwise

Item Code	Weight	Supply
MA BG L-R	0.94 kg	1 unit



'L - L'

- Clockwise + Counter Clockwise

Item Code	Weight	Supply
MA BG L-L	0.94 kg	1 unit

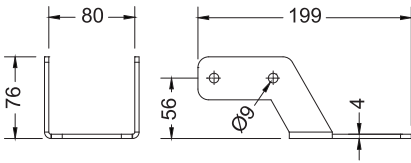


Please consult MODU representative for further information and assistance.

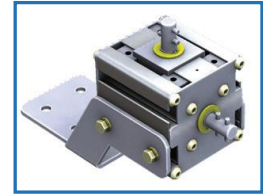
Units: Dimension (mm)

MODU MM3 SERIES - GRIPPER SYSTEM

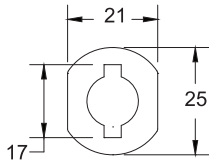
Gear Bracket Holder



Item Code	Weight	Supply
MA BG BR	1.69 kg	1 unit



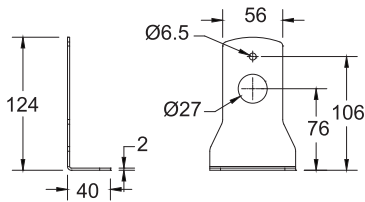
Connecting Rod for Gear Unit



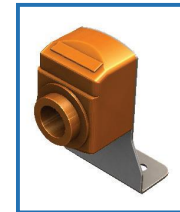
Item Code	Weight	Supply
MA BG 3x25	0.86 kg	3m



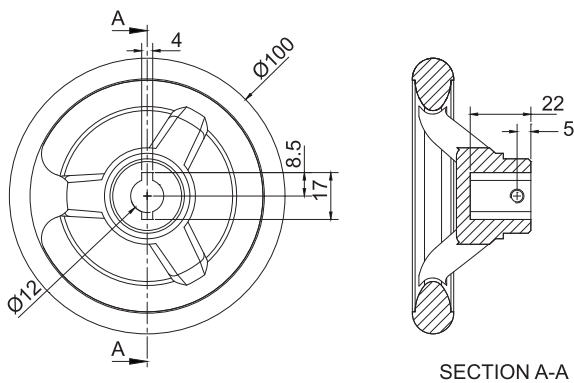
Counter with Support Plate



Item Code	Weight	Supply
MA BG C	0.6 kg	1 unit



Gripper Adjustment Wheel



Item Code	Weight	Supply
MA WH 100	0.45 kg	1 unit



Please consult MODU representative for further information and assistance.

Units: Dimension (mm)