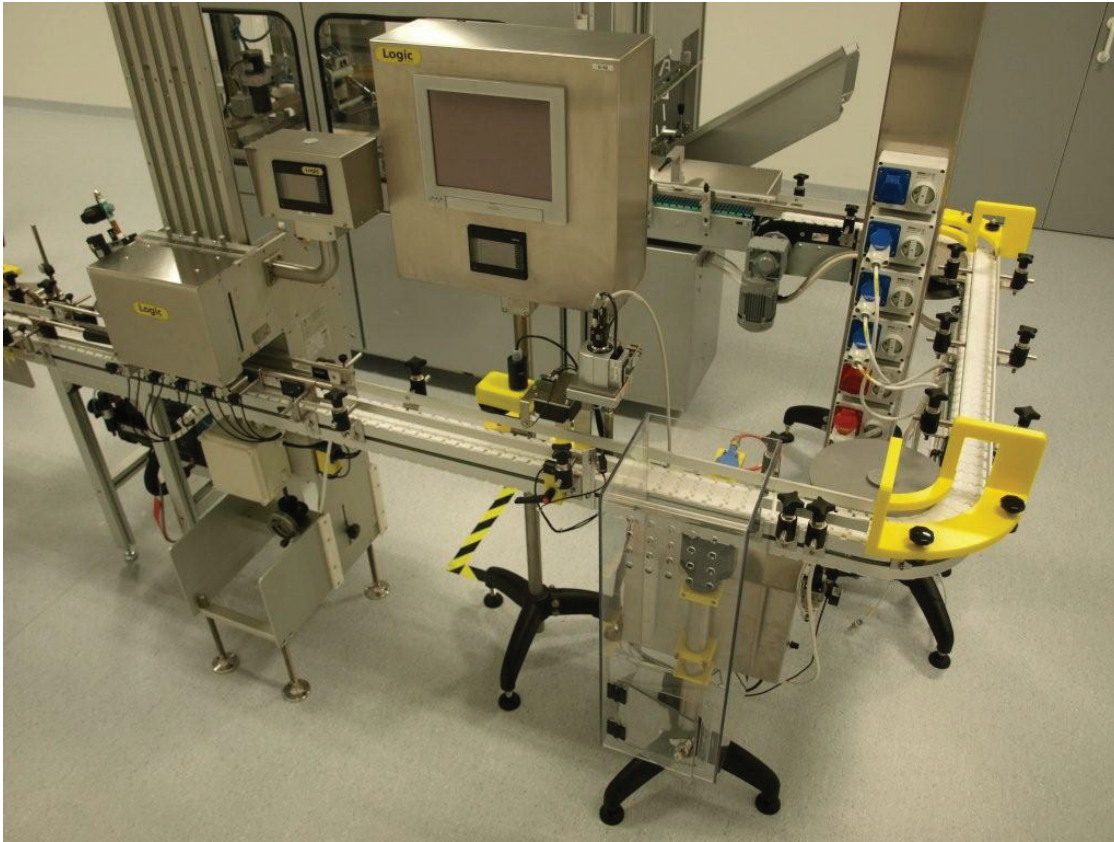


# Conveyor System MS2



## Description

63mm width thermoplastic chain with aluminium frame conveyor system. Also available with stainless steel frame, please refer section DS2.

## Examples of application industries

Personal Products, Pharmaceutical & Chemical Industry, Automotive & Machined Parts Industry, Food & Packaging Industry, Electrical & Electronic Industry, Paper Converting Industry and Optical Industry

## Technical characteristics

Chain Width		63 mm
Chain Pitch		25.4 mm
Chain Weight		0.8 kg/m
Chain Maximum Working Tension		600 N
Max Product Weight*	Horizontal Transport	15 kg
	Vertical Transport	10 kg
Total Load*		200 Kg
Working Temperature*		-10°C to 60°C
Max Conveyor Length*		30m
Max Speed*		50 m/min
Drive Unit Capacity		600 N
Item Width*		15-140 mm

\* Actual limit may vary according to conveyor layout and application.

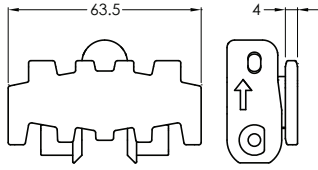


AP  
TR  
MS2  
MM3  
ML2  
ML2  
MX2  
MT2  
MR2  
MR2  
MG  
MB  
MA  
DS2  
DL2  
DX2  
DT2  
DR2  
DF2  
DG  
DB  
DA  
SD  
SE  
TL  
IM  
MM

Please consult MODU representative for further information and assistance.

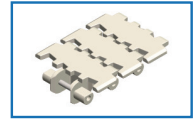
Units: Dimension (mm)

## Chains MS2

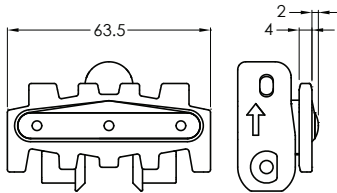


### Plain Chain

- Suitable for conveyor configuration with incline/decline up to 5°.
- Accumulation possible.

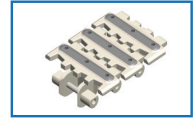


Item Code	Material	Colour	Weight	Supply
MS2 CP 5	POM	White	4.0 kg/roll	5m/roll
MS2 CP 5A	Anti-Static	Black	4.0 kg/roll	5m/roll
MS2 CP 5K	POM-Kevlar	Yellow	6.0 kg/roll	5m/roll

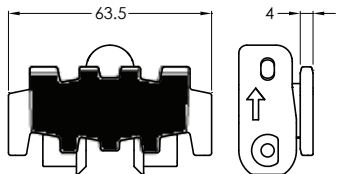


### Friction Chain

- Suitable for conveyor configuration with incline/decline up to 25°.
- Friction material : TPU (grey).
- Accumulation not possible.

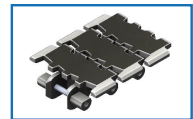


Item Code	Material	Colour	Weight	Supply
MS2 CF 5	POM	White	4.5 kg/roll	5m/roll
MS2 CF 5A	Anti-Static	Black	4.5 kg/roll	5m/roll
MS2 CF 5K	POM-Kevlar	Yellow	6.5 kg/roll	5m/roll

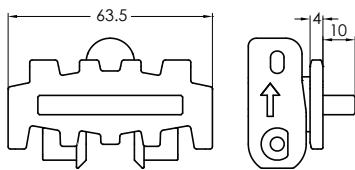


### Flocked Chain

- Suitable for scratch sensitive material.
- Flock colour : Black
- Accumulation possible for light product only.
- Sticker type only

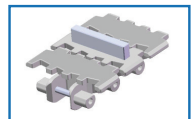


Item Code	Material	Colour	Weight	Supply
MS2 CL 5	POM	White	4.2 kg/roll	5m/roll



### Cleated Chain - Machined PE Cleated

- Required for vertical or steeply inclined / declined conveyor.
- Accumulation not possible.
- Not suitable to be use with Combined and Catenary Drive.
- Please specify pitch between cleat for ordering (eg. MS2 CC 3x10P 3p = Every 3rd link to be cleated).
- \*\*Please consult MODU representative for actual chain weight.



\* Other cleated height are available upon request.

Item Code	Material	Colour	Weight	Supply
MS2 CC 3	POM	White	** kg/roll	3m/roll

## Chain Accessories MS2

### Lubricant For Chain



Silicone-based lubricant, 400ml

Item Code	Weight	Supply
MA SL	0.35 kg	1 pc

### Stainless Steel Pin



Item Code	Weight	Supply
MS2 PN M4x37	0.07 kg	10 pcs/pkt

### Chain Pivot



Item Code	Weight	Supply
MS2 PV	0.01 kg	10 pcs/pkt

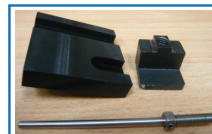
### Chain Pin Insertion Tool



Chain pin insertion tool shown without attachment & specific drive pin

Item Code	Weight	Supply
TR CP 1	1.2 kg	1 pc

### Attachment For Chain Tool



Chain attachment & drive pin

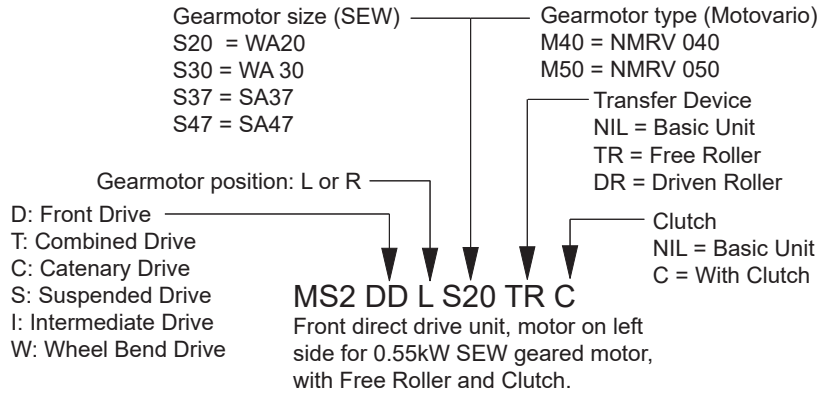
Item Code	Weight	Supply
MS2 AC	0.2 kg	1 set

Please consult MODU representative for further information and assistance.

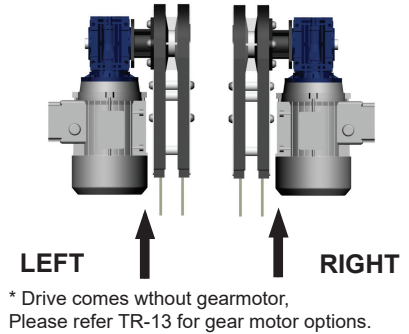
Units: Dimension (mm)

## Drive Units MS2

### Item Code Guideline For Drive Units



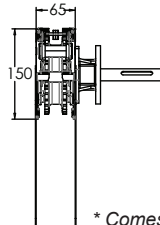
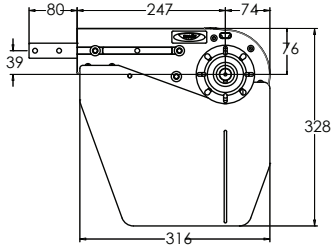
### Motor Orientation Guideline



eg. Code for Basic unit; MS2 DT R M50 => Combined drive unit, motor on right side for Motovario NMRV 050 geared motor.

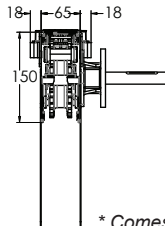
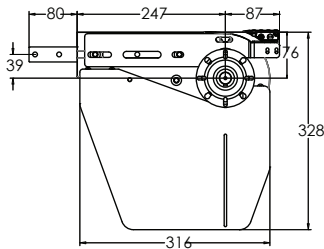
### Front Drive Unit

#### Basic Front Drive



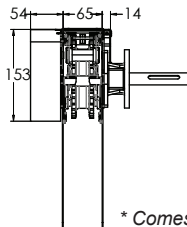
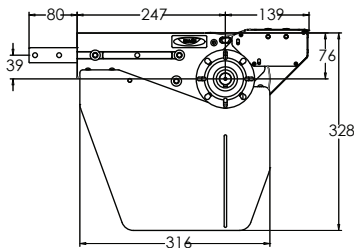
\* Comes without Safety Cover

#### Front Drive with Free Roller

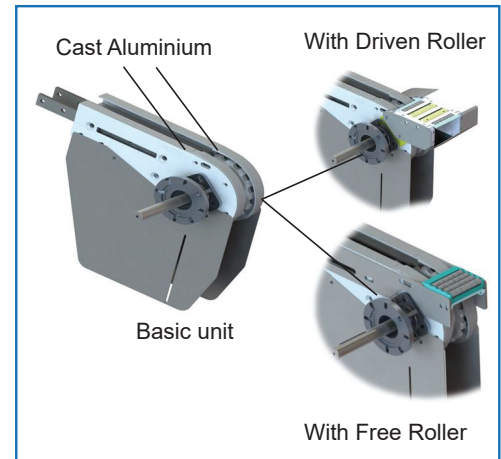


\* Comes without Safety Cover

#### Front Drive with Driven Roller



\* Comes without Safety Cover



- Driven Roller speed is approximately 10% higher than conveyor speed.

Item Code	Weight	Supply
MS2 DD2 R/L S/M Basic drive unit	3.0 kg	1 unit
MS2 DD2 R/L S/M TR With transfer roller	4.0 kg	1 unit
MS2 DD2 R/L S/M DR With driven roller	5.3 kg	1 unit

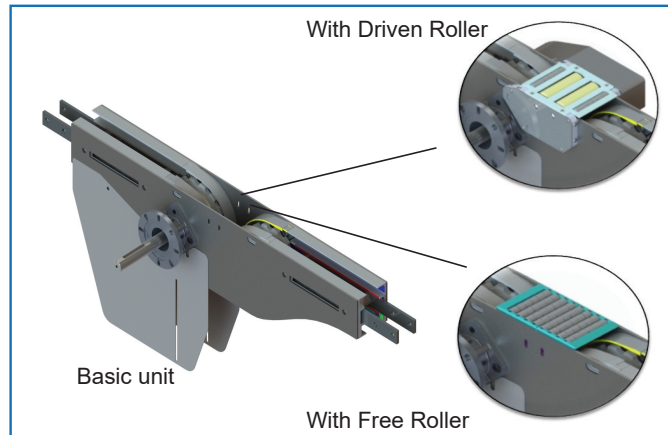
Effective track length: 0.80m  
 Traction force: 600N  
 - Connecting strip and set screw included.  
 Note:  
 - Safety Cover comes as an option.  
 - Recommended maximum chain elongation is 328mm from top conveyor to chain slack.  
 - Refer TR15 for chain effective track length calculation.  
 - Cleated Chain is not possible to use on drive with Free Roller or Driven Roller.

Please consult MODU representative for further information and assistance.

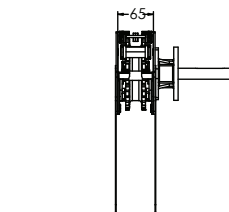
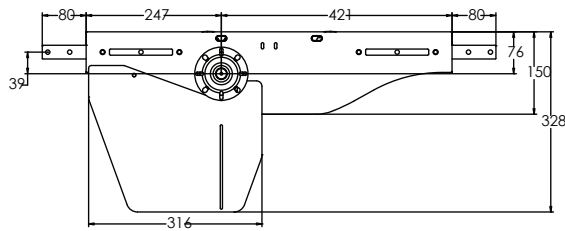
Units: Dimension (mm)

# Drive Units MS2 (Continued)

## Combined Drive Unit

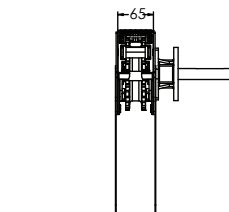
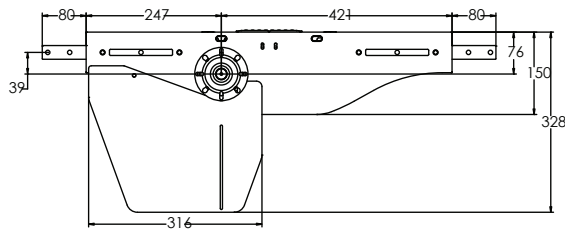


Basic Combined Drive



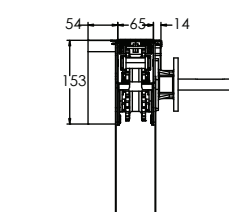
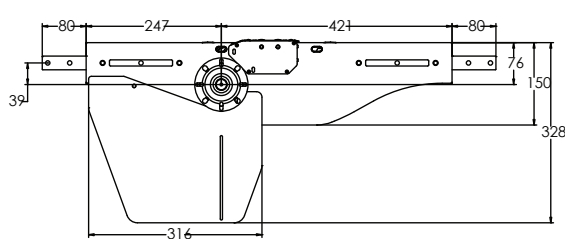
\* Comes without Safety Cover

Combined Drive with Free Roller



\* Comes without Safety Cover

Combined Drive with Driven Roller



\* Comes without Safety Cover

- Driven Roller speed is approximately 10% higher than conveyor speed.

Item Code	Weight	Supply
MS2 DT2 R/L S/M Basic drive unit	8.9 kg	1 unit
MS2 DT2 R/L S/M TR With transfer roller	9.1 kg	1 unit
MS2 DT2 R/L S/M DR With driven roller	10.4 kg	1 unit

Effective track length: 1.32m

Traction force: 600N

- Connecting strip and set screw included.

Note:

- Safety Cover comes as an option.

- Recommended maximum chain elongation is 328mm from top conveyor to chain slack.

- Refer TR15 for chain effective track length calculation.

- Cleated Chain is not possible to use on this drive.

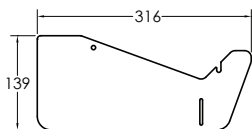
Please consult MODU representative for further information and assistance.

Units: Dimension (mm)

## Drive Units MS2 (Continued)

### Safety Cover for Direct Drive and Combined Drive (Option)

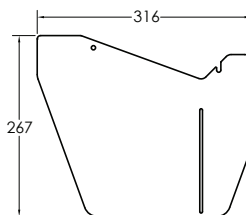
#### Short Safety Cover



- Material : Stainless Steel

Item Code	Weight	Supply
SC2 139	0.8 kg	2 pcs/set

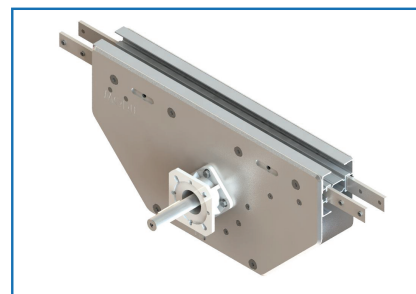
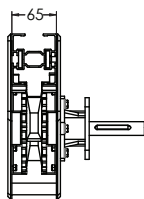
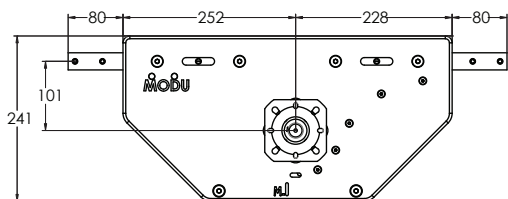
#### Normal Safety Cover



- Material : Stainless Steel

Item Code	Weight	Supply
SC2 267	1.4 kg	2 pcs/set

### Intermediate Drive Unit



Item Code	Weight	Supply
MS2 DI2 R/L S/M	13.0 kg	1 unit

Effective track length: 1.2m

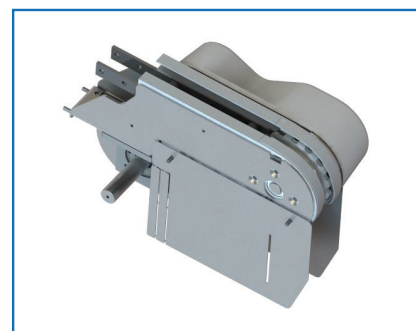
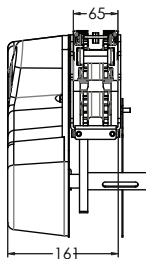
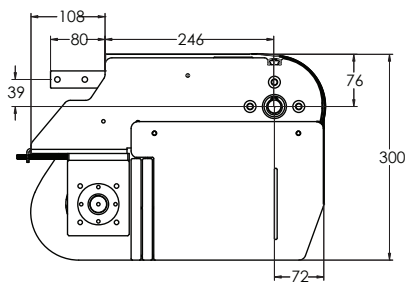
Traction force: 100N

- Connecting strip and set screw included.

Note:

- Refer TR15 for chain effective track length calculation.

### Suspended Drive Unit



Item Code	Weight	Supply
MS2 DS2 R/L S/M Without Clutch	14.5 kg	1 unit
MS2 DT2 R/L S/M C With Clutch	15.5 kg	1 unit

Effective track length: 0.8m

Traction force: 600N

- Connecting strip and set screw included.

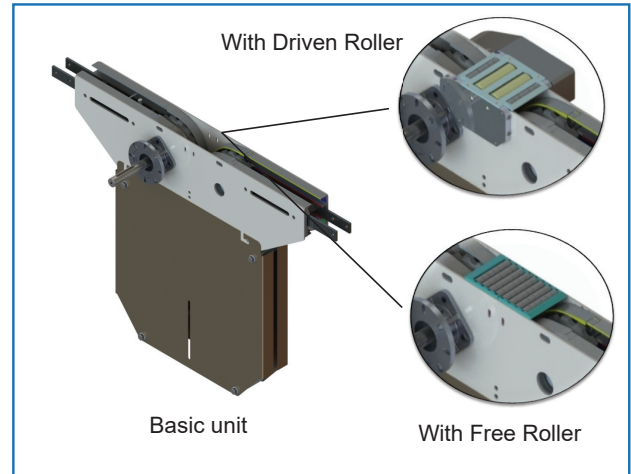
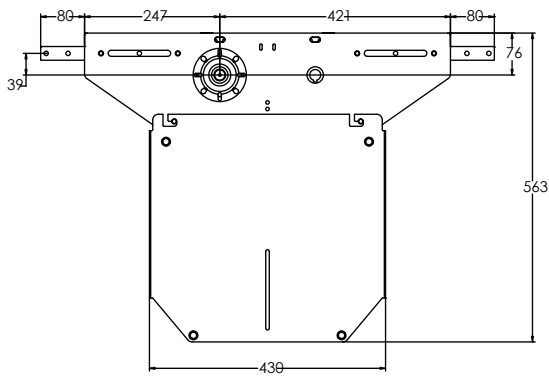
Note:

- Refer TR15 for chain effective track length calculation.

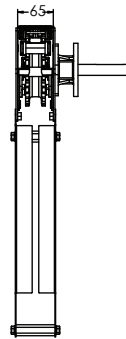
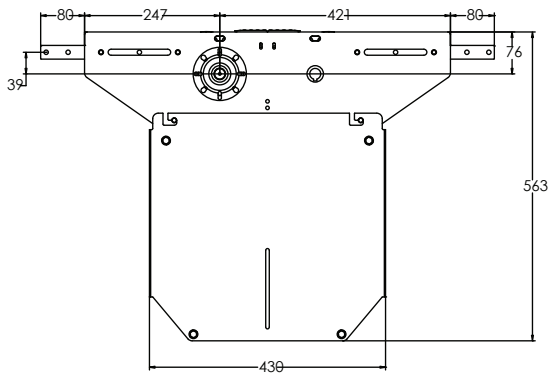
# Drive Units MS2 (Continued)

## Catenary Drive Unit

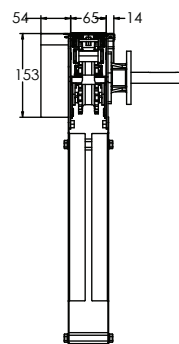
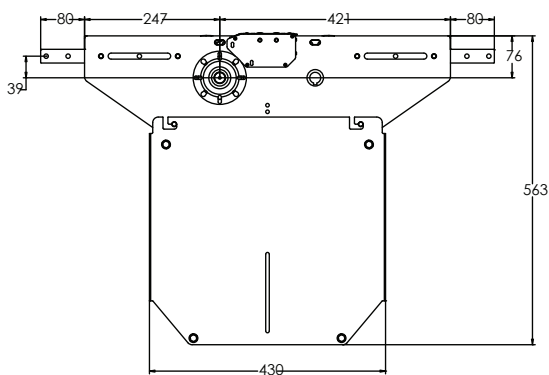
Basic Catenary Drive



Catenary Drive with Free Roller



Catenary Drive with Driven Roller



- Driven Roller speed is approximately 10% higher than conveyor speed.

Item Code	Weight	Supply
MS2 DC2 R/L S/M Basic drive unit	15.5 kg	1 unit
MS2 DC2 R/L S/M TR With transfer roller	15.7 kg	1 unit
MS2 DC2 R/L S/M DR With driven roller	17.0 kg	1 unit

Effective track length: 1.8m

Traction force: 600N

- Connecting strip and set screw included.

Note:

- For top running chain.

- Refer TR15 for chain effective track length calculation.

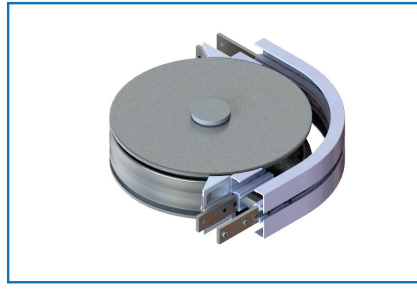
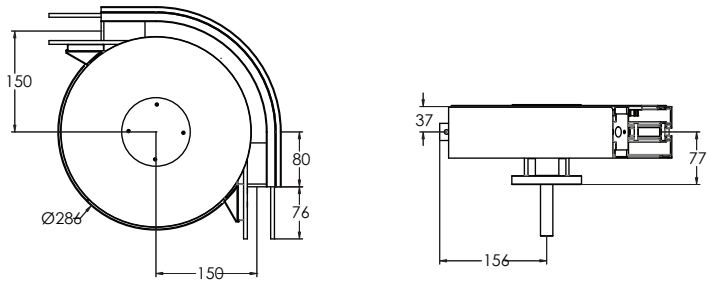
- Cleated Chain is not possible to use on this drive.

Please consult MODU representative for further information and assistance.

Units: Dimension (mm)

## Drive Units MS2 (Continued)

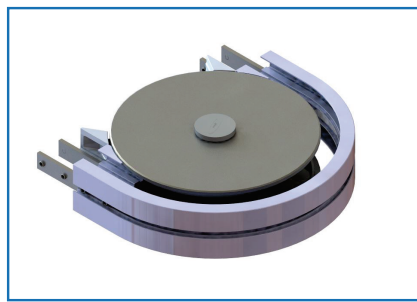
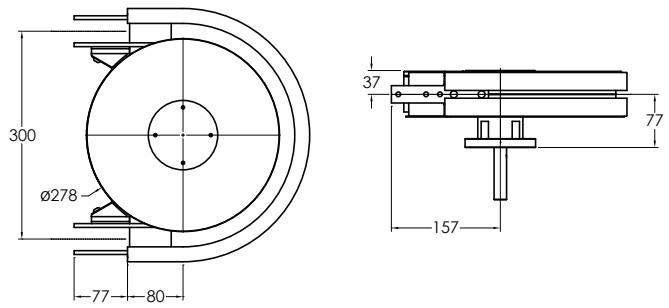
### 90° Wheel Bend Drive Unit



Item Code	Weight	Supply
MS2 DW2 90R150 S/M	6.0 kg	1 unit

Effective track length: 0.4m  
Traction force: 100N  
- Connecting strip and set screw included.

### 180° Wheel Bend Drive Unit

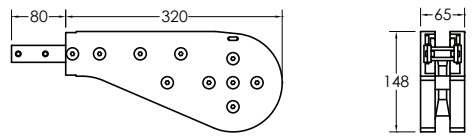


Item Code	Weight	Supply
MS2 DW2 180R150 S/M	7.0 kg	1 unit

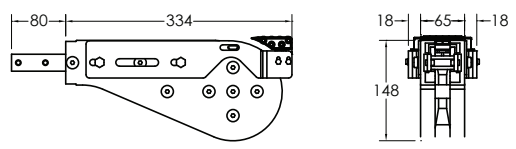
Effective track length: 0.63M  
Traction force: 100N  
- Connecting strip and set screw included.

### Idler End

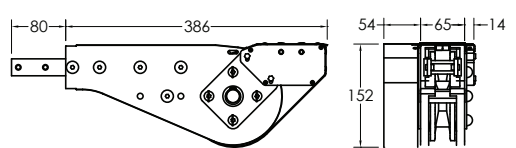
#### Basic Idler End



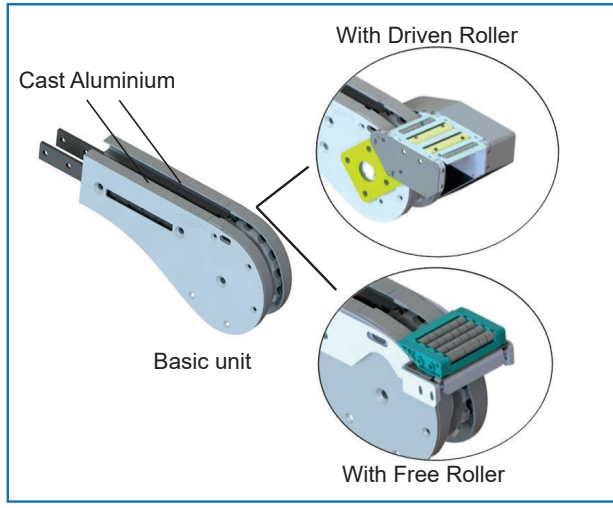
#### Idler End with Free Roller



#### Idler End with Driven Roller \*(Right)



- Driven Roller speed is approximately 10% higher than conveyor speed.  
**Effective track length: 0.8m**  
- Connecting strip and set screw included.  
Note:  
- Cleated Chain not suitable for Driven Roller & Free Roller.

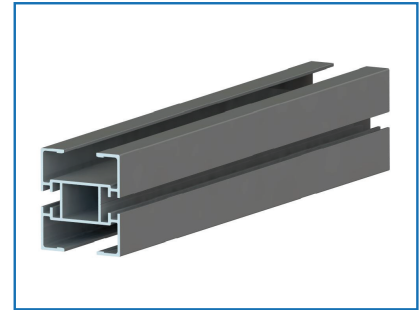
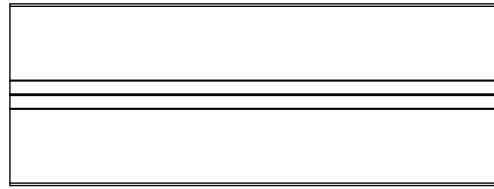
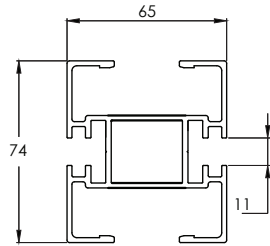


Item Code	Weight	Supply
MS2 IE2 320 Basic drive unit	3.0 kg	1 unit
MS2 IE2 320 TR With transfer roller	3.2 kg	1 unit
MS2 IE2 320 DR With driven roller	4.5 kg	1 unit

Please consult MODU representative for further information and assistance.

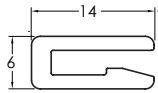
Units: Dimension (mm)

## Conveyor Beam MS2



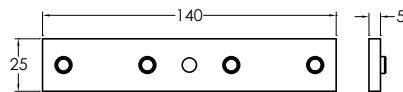
Item Code	Weight	Supply
MS2 HB 3	6.1 kg	3m

## Accessories MS2



### Slide Rail

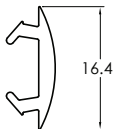
Item Code	Material	Colour	Weight	Supply
MS SR 25	HDPE	Pure White	1.2 kg/roll	25m/roll
MS SR 25A	Anti-Static	Grey	1.2 kg/roll	25m/roll
MS SR 25U	UHMW-PE	Semi-Transparent White	2.7 kg/roll	25m/roll
MS SR 25P	PVDF	Natural White	2.7 kg/roll	25m/roll



### Connecting Strip

Item Code	Weight	Supply
MA CS 25x140	1.5 kg	10 pcs/pkt

- 4 pcs M8 set screw included.



### T-Slot Cover

Item Code	Material	Colour	Weight	Supply
MB SC 25T	TPE	Grey	1.5 kg/roll	25m/roll
MB SC 25P	PVC	Light Grey	1.3 kg/roll	25m/roll



### Rivets

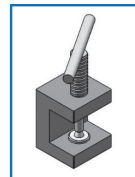
Item Code	Weight	Supply
MA RR 3	0.02 kg	50 pcs/pkt

Material: Aluminium



### Slide Rail Cutter

Item Code	Weight	Supply
MA SC	0.5 kg	1 pc



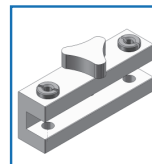
### Rivet Crimping

Item Code	Weight	Supply
MA RC	0.13 kg	1 pc



### Slide Rail Mounting Tool

Item Code	Weight	Supply
MS2 SRA	0.4 kg	1 pc



### Slide Rail Drill Fixture

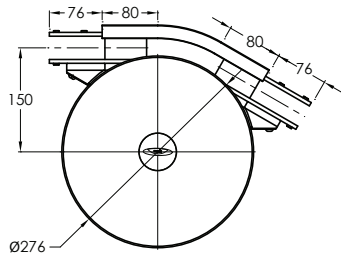
Item Code	Weight	Supply
MA SRF	0.24 kg	1 pc

Please consult MODU representative for further information and assistance.

Units: Dimension (mm)



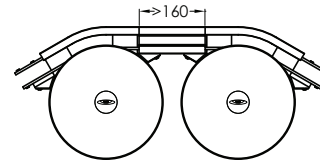
## Horizontal Wheel Bends MS2



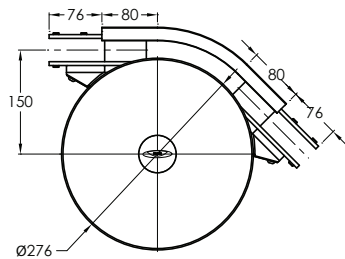
### Wheel Bend, 30°

Item Code	Weight	Supply
MS2 BW2 30R150	5.6 kg	1 set

Effective track length:  
 0.24m 1-way (0.48 m 2-way)  
 Tolerance:  $\pm 2^\circ$   
 - Connecting strip and set screw included.



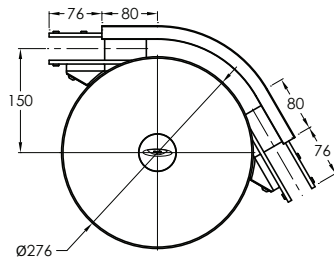
Minimum straight section for all wheel bend connection.



### Wheel Bend, 45°

Item Code	Weight	Supply
MS2 BW2 45R150	5.7 kg	1 set

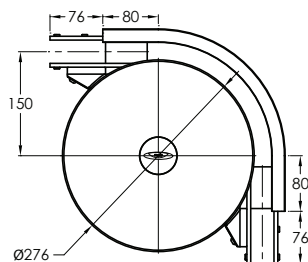
Effective track length:  
 0.28m 1-way (0.56m 2-way)  
 Tolerance:  $\pm 2^\circ$   
 - Connecting strip and set screw included.



### Wheel Bend, 60°

Item Code	Weight	Supply
MS2 BW2 60R150	5.7 kg	1 set

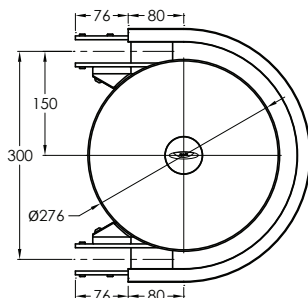
Effective track length:  
 0.31m 1-way (0.62 m 2-way)  
 Tolerance:  $\pm 2^\circ$   
 - Connecting strip and set screw included.



### Wheel Bend, 90°

Item Code	Weight	Supply
MS2 BW2 90R150	5.8 kg	1 set

Effective track length:  
 0.4m 1-way (0.8m 2-way)  
 Tolerance:  $\pm 2^\circ$   
 - Connecting strip and set screw included.



### Wheel Bend, 180°

Item Code	Weight	Supply
MS2 BW2 180R150	5.9 kg	1 set

Effective track length:  
 0.63m 1-way (1.26 m 2-way).  
 Tolerance:  $\pm 2^\circ$   
 - Connecting strip and set screw included.

Please consult MODU representative for further information and assistance.

Units: Dimension (mm)

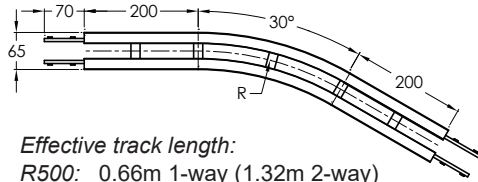
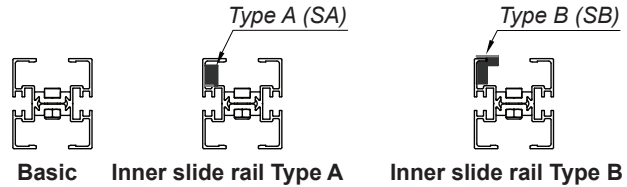
## Horizontal Plain Bends MS2

Plain bends comes with options for optimum usage

-Plain bend basic Unit.

-Plain bend with inner slide rail Type A (SA), Material = PE.

-Plain bend with inner slide rail Type B (SB), Material = Nylon.



Effective track length:

R500: 0.66m 1-way (1.32m 2-way)

R700: 0.77m 1-way (1.54m 2-way)

R1000: 0.92m 1-way (1.84m 2-way).

Tolerance:  $\pm 2^\circ$  & Radius:  $\pm 10\text{mm}$

- Connecting strip and set screw included.

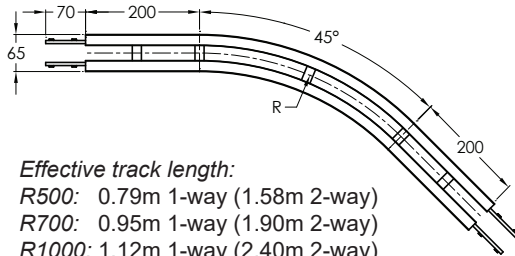
### Horizontal Plain Bend, 30°

#### Without Inner Slide Rail

Item Code	R	Weight	Supply
MS2 BP2 30R500	500 mm	1.8 kg	1 set
MS2 BP2 30R700	700 mm	2.1 kg	1 set
MS2 BP2 30R1000	1000 mm	2.4 kg	1 set

#### With Inner Slide Rail

Item Code	R	Weight	Supply
MS2 BP2 30R500 SA	500 mm	2.0 kg	1 set
MS2 BP2 30R700 SA	700 mm	2.4 kg	1 set
MS2 BP2 30R1000 SA	1000 mm	2.9 kg	1 set



Effective track length:

R500: 0.79m 1-way (1.58m 2-way)

R700: 0.95m 1-way (1.90m 2-way)

R1000: 1.12m 1-way (2.40m 2-way)

Tolerance:  $\pm 2^\circ$  & Radius:  $\pm 10\text{mm}$

- Connecting strip and set screw included.

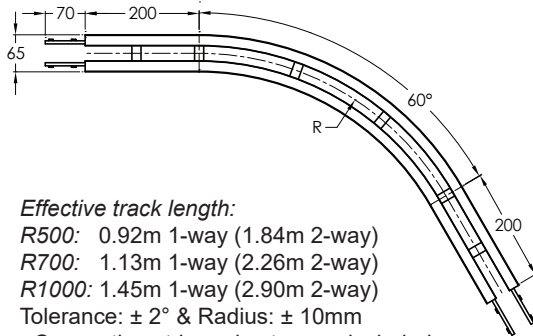
### Horizontal Plain Bend, 45°

#### Without Inner Slide Rail

Item Code	R	Weight	Supply
MS2 BP2 45R500	500 mm	2.1 kg	1 set
MS2 BP2 45R700	700 mm	2.4 kg	1 set
MS2 BP2 45R1000	1000 mm	2.8 kg	1 set

#### With Inner Slide Rail

Item Code	R	Weight	Supply
MS2 BP2 45R500 SA	500 mm	2.5 kg	1 set
MS2 BP2 45R700 SA	700 mm	2.9 kg	1 set
MS2 BP2 45R1000 SA	1000 mm	3.3 kg	1 set



Effective track length:

R500: 0.92m 1-way (1.84m 2-way)

R700: 1.13m 1-way (2.26m 2-way)

R1000: 1.45m 1-way (2.90m 2-way)

Tolerance:  $\pm 2^\circ$  & Radius:  $\pm 10\text{mm}$

- Connecting strip and set screw included.

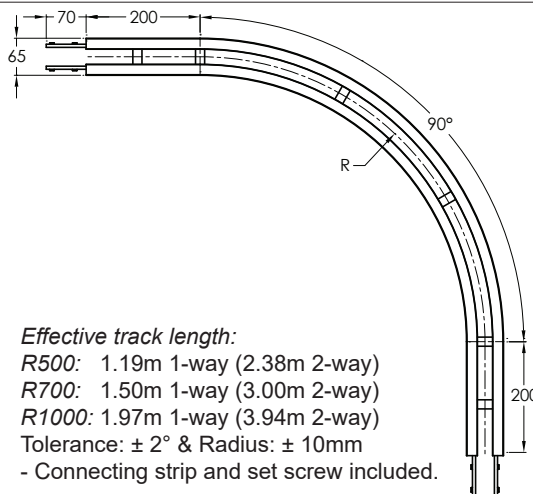
### Horizontal Plain Bend, 60°

#### Without Inner Slide Rail

Item Code	R	Weight	Supply
MS2 BP2 60R500	500 mm	2.4 kg	1 set
MS2 BP2 60R700	700 mm	2.8 kg	1 set
MS2 BP2 60R1000	1000 mm	3.4 kg	1 set

#### With Inner Slide Rail

Item Code	R	Weight	Supply
MS2 BP2 60R500 SA	500 mm	2.7 kg	1 set
MS2 BP2 60R700 SA	700 mm	3.1 kg	1 set
MS2 BP2 60R1000 SA	1000 mm	3.9 kg	1 set



Effective track length:

R500: 1.19m 1-way (2.38m 2-way)

R700: 1.50m 1-way (3.00m 2-way)

R1000: 1.97m 1-way (3.94m 2-way)

Tolerance:  $\pm 2^\circ$  & Radius:  $\pm 10\text{mm}$

- Connecting strip and set screw included.

### Horizontal Plain Bend, 90°

#### Without Inner Slide Rail

Item Code	R	Weight	Supply
MS2 BP2 90R500	500 mm	2.9 kg	1 set
MS2 BP2 90R700	700 mm	3.6 kg	1 set
MS2 BP2 90R1000	1000 mm	4.5 kg	1 set

#### With Inner Slide Rail

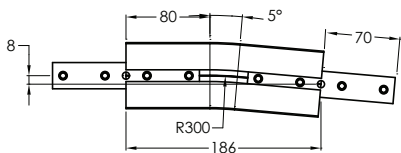
Item Code	R	Weight	Supply
MS2 BP2 90R500 SA	500 mm	3.3 kg	1 set
MS2 BP2 90R700 SA	700 mm	4.5 kg	1 set
MS2 BP2 90R1000 SA	1000 mm	5.2 kg	1 set

\* Please refer MODU representative for Inner Slide Rail Type B

Please consult MODU representative for further information and assistance.

Units: Dimension (mm)

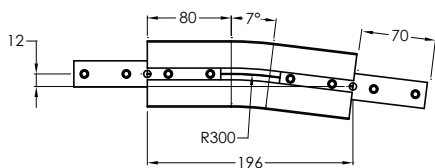
## Vertical Bends MS2



### Vertical Bend, 5°

Item Code	Weight	Supply
MS2 BV2 5R300	1.0 kg	1 set

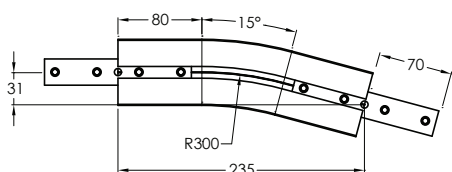
Effective track length:  
 R300: 0.19m 1-way (0.38m 2-way)  
 Tolerance:  $\pm 2^\circ$  & Radius:  $\pm 10$ mm  
 - Connecting strip and set screw included.



### Vertical Bend, 7°

Item Code	Weight	Supply
MS2 BV2 7R300	1.0 kg	1 set

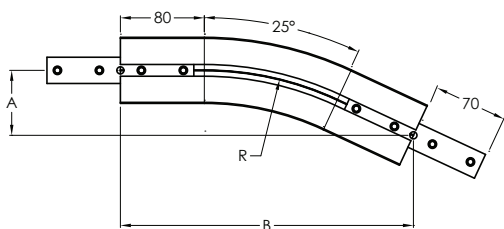
Effective track length:  
 R300: 0.20m 1-way (0.40m 2-way)  
 Tolerance:  $\pm 2^\circ$  & Radius:  $\pm 10$ mm  
 - Connecting strip and set screw included.



### Vertical Bend, 15°

Item Code	Weight	Supply
MS2 BV2 15R300	1.0 kg	1 set

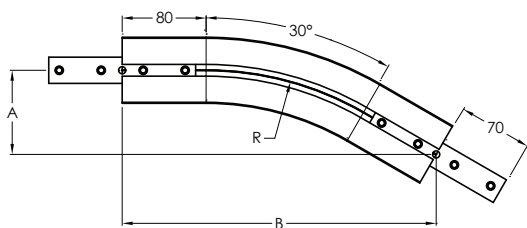
Effective track length:  
 R300: 0.24m 1-way (0.48m 2-way)  
 Tolerance:  $\pm 2^\circ$  & Radius:  $\pm 10$ mm  
 - Connecting strip and set screw included.



### Vertical Bend, 25°

Item Code	R	A	B	Weight	Supply
MS2 BV2 25R300	300 mm	62 mm	279 mm	1.1 kg	1 set
MS2 BV2 25R1000	1000 mm	128 mm	575 mm	2.0 kg	1 set

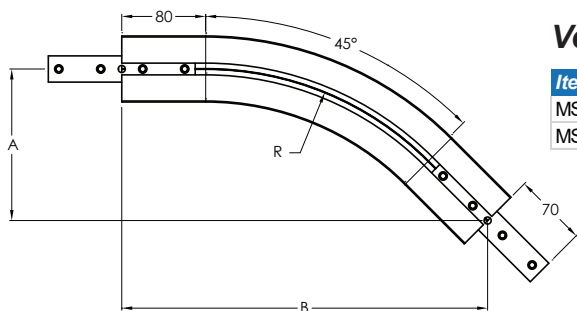
Effective track length:  
 R300: 0.29m 1-way (0.58m 2-way)  
 R1000: 0.60m 1-way (1.20m 2-way)  
 Tolerance:  $\pm 2^\circ$  & Radius:  $\pm 10$ mm  
 - Connecting strip and set screw included.



### Vertical Bend, 30°

Item Code	R	A	B	Weight	Supply
MS2 BV2 30R300	300 mm	80 mm	299 mm	1.3 kg	1 set
MS2 BV2 30R1000	1000 mm	174 mm	649 mm	2.5 kg	1 set

Effective track length:  
 R300: 0.32m 1-way (0.64m 2-way)  
 R1000: 0.68m 1-way (1.36m 2-way)  
 Tolerance:  $\pm 2^\circ$  & Radius:  $\pm 10$ mm  
 - Connecting strip and set screw included.



### Vertical Bend, 45°

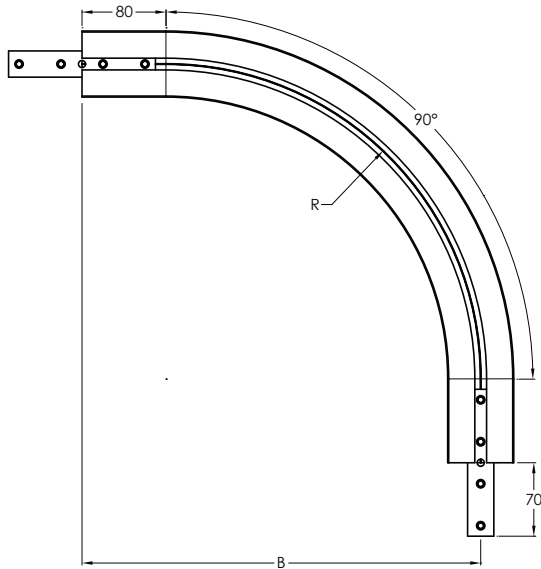
Item Code	R	A	B	Weight	Supply
MS2 BV2 45R300	300 mm	145 mm	349 mm	1.3 kg	1 set
MS2 BV2 45R1000	1000 mm	350 mm	844 mm	2.3 kg	1 set

Effective track length:  
 R300: 0.40m 1-way (0.80m 2-way)  
 R1000: 0.95m 1-way (1.90m 2-way)  
 Tolerance:  $\pm 2^\circ$  & Radius:  $\pm 10$ mm  
 - Connecting strip and set screw included.

Please consult MODU representative for further information and assistance.

Units: Dimension (mm)

## Vertical Bends MS2 (Continued)



### Vertical Bend, 90°

Item Code	R	A	Weight	Supply
MS2 BV2 90R300	300 mm	380 mm	1.7 kg	1 set
MS2 BV2 90R1000	1000 mm	1080 mm	4.0 kg	1 set

Effective track length:

R300: 0.63m 1-way (1.26m 2-way)

R1000: 1.73m 1-way (3.46m 2-way)

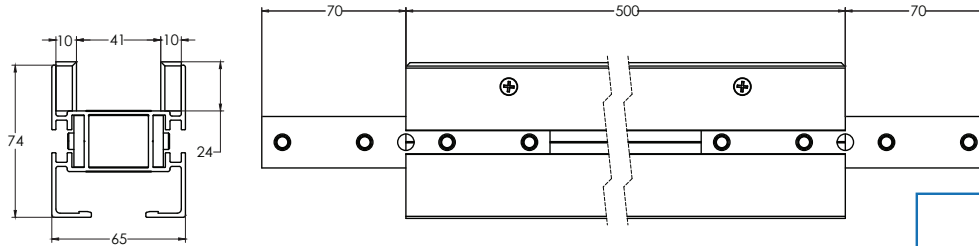
Tolerance:  $\pm 2^\circ$  & Radius:  $\pm 10$ mm

- Connecting strip and set screw included.

Notes:

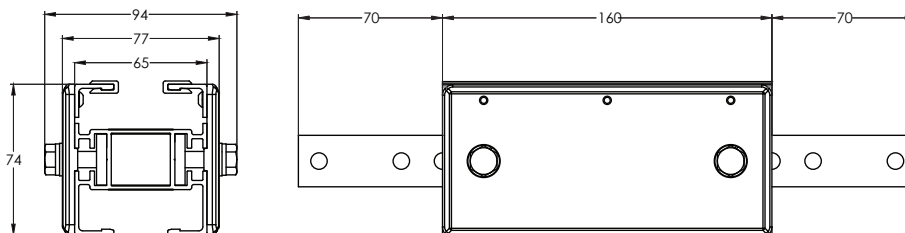
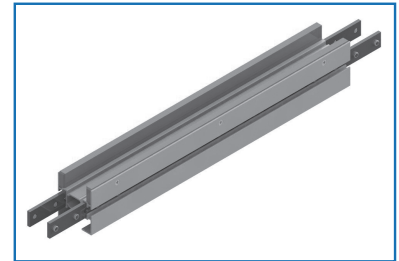
- Non-Standard Vertical Bend also available in PE and Stainless Steel with minimum radius of 300mm.

## Beam Section For Chain Installation



### Type A

Item Code	Weight	Supply
MS2 LU2 500	1.4 kg	1 set



### Type B

Item Code	Weight	Supply
MS2 CIS2 160	1.3 kg	1 set

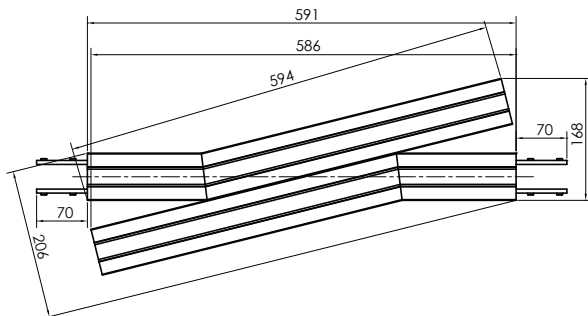
- Slide rail, connecting strip and set screw included.



Please consult MODU representative for further information and assistance.

Units: Dimension (mm)

## Diagonal Beam



- A combination drive and idler unit used for smooth transferring of unstable products between conveyors.

- All available standard drives fit this unit. Please indicate the drive unit type when placing an order. Refer to page MS2-3 for drive unit order guidelines.

Item Code	Weight	Supply
MS2 DXD2	12.9 kg	1 set

- Drive and idler not included.
- Connecting strip and set screw included.

