

MODU DX2 CONVEYOR SERIES

Technical Characteristics

Chain Width	220 mm
Chain Pitch	44.5 mm
Chain Weight	3.4 kg/m
Chain Working Tension (Max)	
With Bend	1000 N
Without Bend	1200 N
Max Product Weight*	
Horizontal Transport	25.0 kg
Vertical Transport	15.0 kg
Total Load*	400 kg
Working Temperature*	-10°C to 60°C
Max Conveyor Length*	30 m
Max speed*	50 m/min
Drive Unit Capacity	1300 N
Item Width*	70 - 500 mm

* Actual limit may vary according to conveyor layout and application.



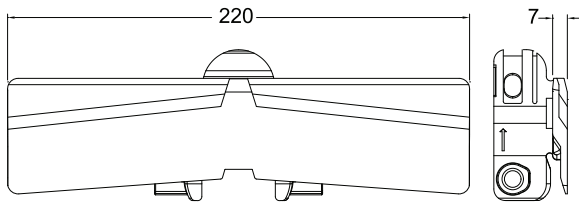
Chain Width 220mm

Contents

Chain MX2.....	272
Chain Accessories MX2.....	273
Drive Units DX2.....	274
Idler End DX2.....	276

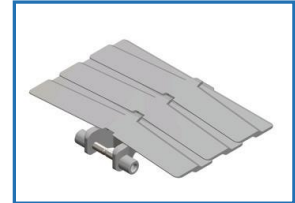
Conveyor Beam DX2.....	277
Accessories DX2.....	277
Horizontal Plain Bend DX2.....	278
Vertical Bend DX2.....	279

Chain MX2

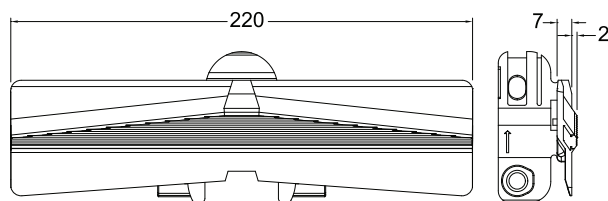


Plain Chain

- Suitable for conveyor configuration with incline/decline up to 7°.
- Accumulation possible.

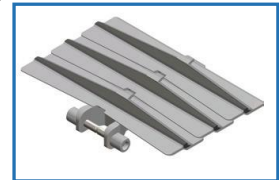


Item Code	Material	Color	Weight	Supply
MX2 CP 5	POM	White	17.2 kg/roll	5m/roll

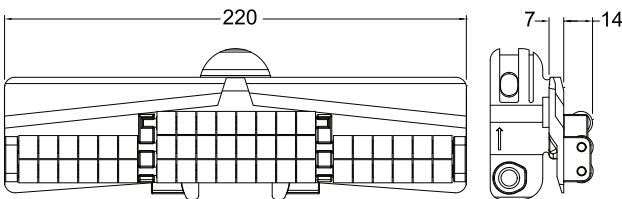


Friction Chain

- Suitable for conveyor configuration with incline/decline up to 25°.
- Friction material : TPE (grey).
- Accumulation not possible

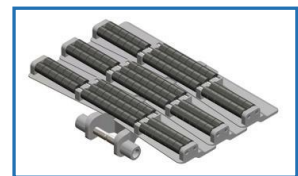


Item Code	Material	Color	Weight	Supply
MX2 CF 5	POM	White	18.2 kg/roll	5m/roll

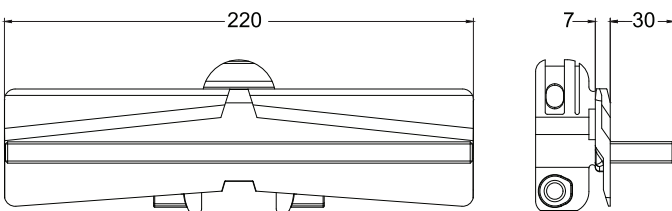


Roller Top Chain

- Accumulation possible.
- Low back force.



Item Code	Material	Color	Weight	Supply
MX2 RT 3	POM	White	22.0 kg/roll	3m/roll



Cleated Link - PE Cleated (Machine)

- Required for vertical or steeply inclined /declined conveyor.
- Accumulation not possible.
- Not suitable to be use with Combined Drive.
- Supply in pieces.

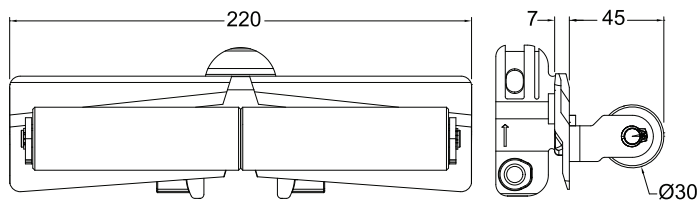


*P
Please specify pitch between cleat for ordering
(eg. MX2 CC 3x30 4P ; 4P = Every 4rd link to be cleated).
* Non-standard height are available upon request.

Item Code	Material	Color	Weight	Supply
MX2 CC 3x30 *P	POM	White	** kg/pc	1 pc

Please consult MODU representative for further information and assistance.

Units: Dimension (mm)



Roller Cleated Link

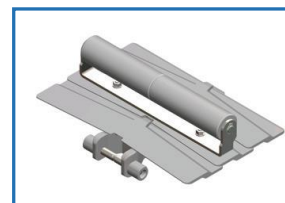
- Required for vertical or steeply inclined / declined conveyor.
- Accumulation not possible.
- Not suitable to be use with Combined Drive.
- Supply in pieces.

*p

Please specify pitch between cleat for ordering
(eg. MX2 CR 3x15P 3p = Every 3rd link to be cleated).

* Non-standard height are available upon request.

Item Code	Material	Color	Weight	Supply
MX2 CR 3X15P *p	POM	White	** kg/pc	1 pc



Chain Accessories MX2

Lubricant For Chain



Silicone-based lubricant,
400ml

Item Code	Weight	Supply
MA SL	0.35 kg/can	1 can

Stainless Steel Pin



Item Code	Weight	Supply
ML2 PN M8x73	0.07 kg	10 pcs / pkt

Chain Pivot

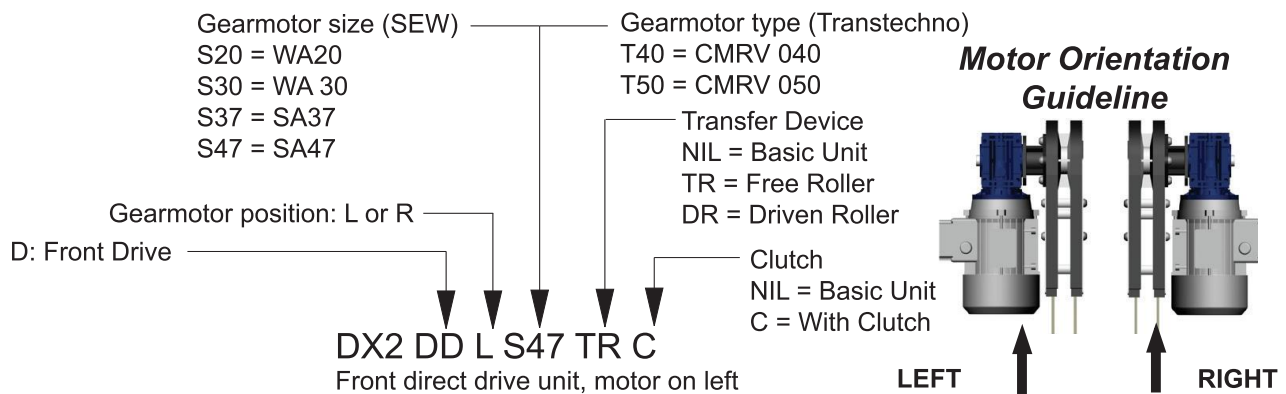


Item Code	Weight	Supply
ML2 PV	0.07 kg	10 pcs / pkt

Please consult MODU representative for further information and assistance.

Units: Dimension (mm)

Drive Units DX2

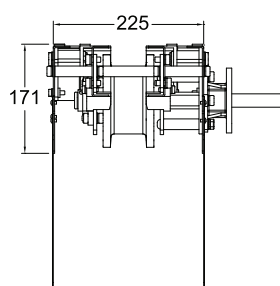
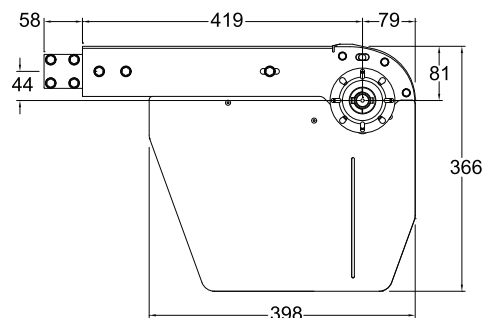


Example. Code for Basic unit; side for 0.55kW SEW geared motor

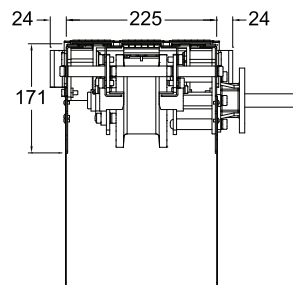
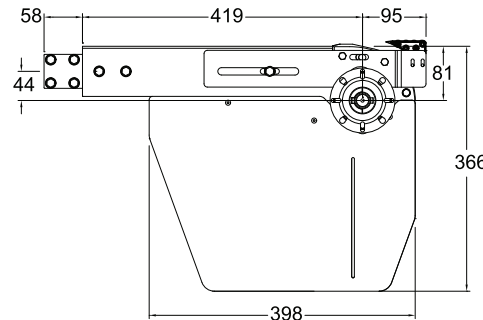
DX2 DD R S47 => Front drive unit, motor on right side for SEW SA47 gearmotor.

Front Drive Unit

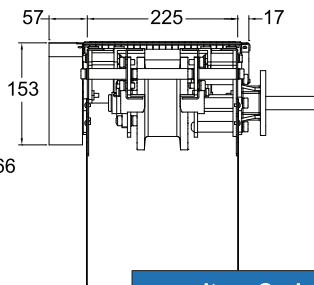
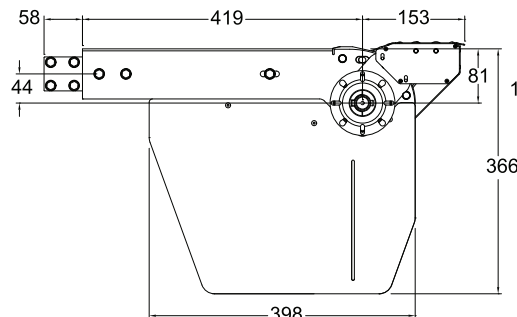
Basic Front Drive



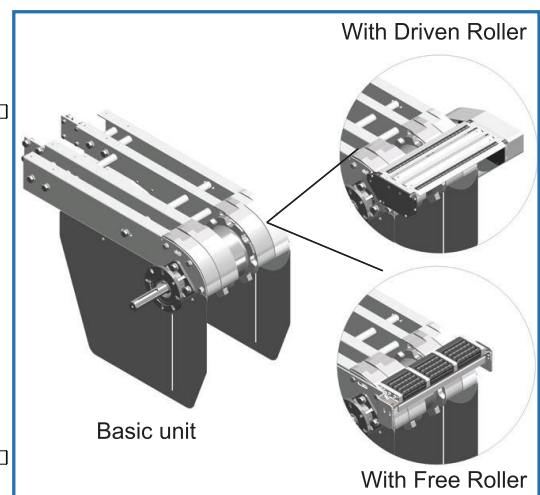
Front Drive with Free Roller



Front Drive with Driven Roller



Driven Roller speed is approximately 10% higher than conveyor speed.



**Comes without safety cover

- Effective track length: 1.16m
- Traction force: 1300N
- Connecting strip and M8 hex screw included.

Note:

- Safety Cover comes as an option.
- Recommended maximum chain elongation is 328mm from top conveyor to chain slack.

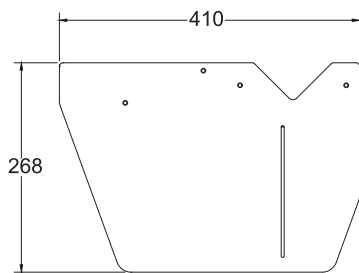
Item Code	Description	Weight	Supply
DX2 DD R/L S/T	Basic drive unit	8.5 kg	1 unit
DX2 DD R/L S/T TR	With transfer roller	9.0 kg	1 unit
DX2 DD R/L S/T DR	With driven roller	10.5 kg	1 unit

Please consult MODU representative for further information and assistance.

Units: Dimension (mm)

MODU DX2 SERIES - DRIVE UNITS

Standard Safety Cover

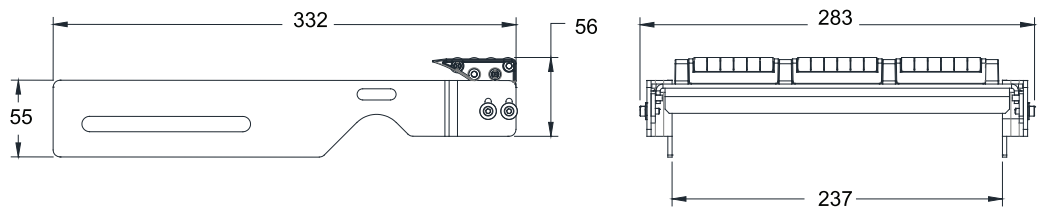


- Material : Stainless Steel
- Suitable to be used with front drive unit and combined drive unit

Item Code	Weight	Supply
SC2 268	1.8 kg	2 pcs/set

Free Transfer Roller

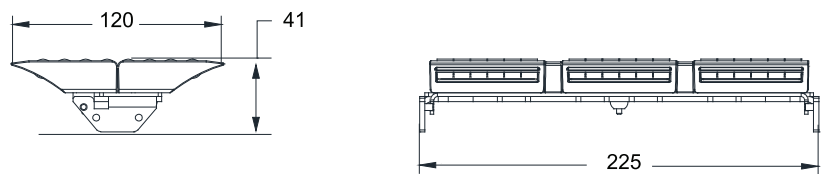
Direct Drive Unit



Item Code	Weight	Supply
MX2 TR DD/IE	1.2 kg	1 unit



Combined Drive Unit



Item Code	Weight	Supply
MX2 TR DT	0.62 kg	1 unit

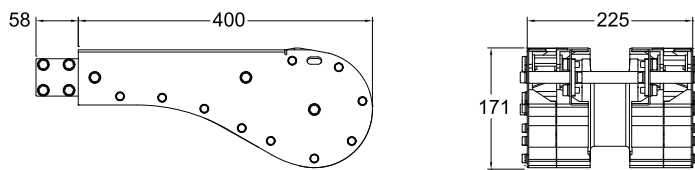


Please consult MODU representative for further information and assistance.

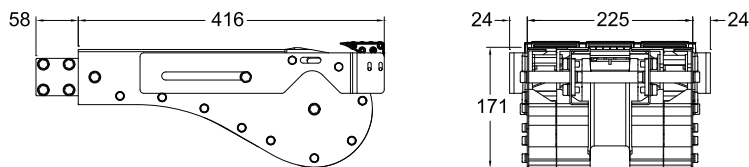
Units: Dimension (mm)

Idler End DX2

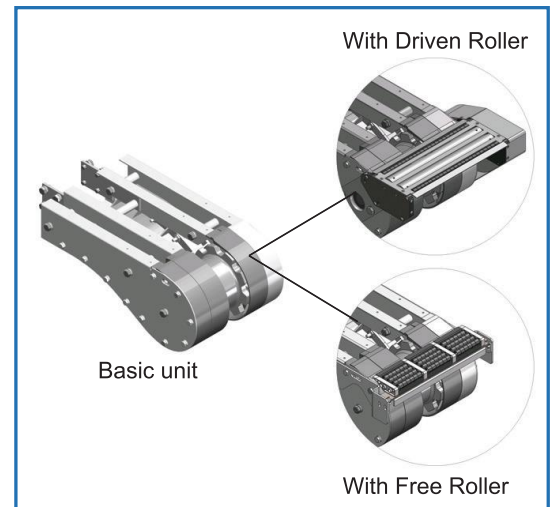
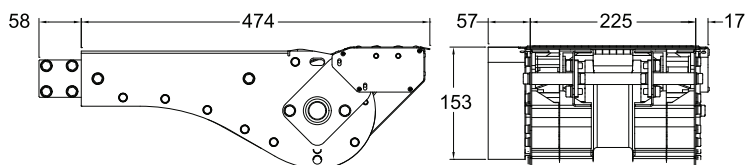
Basic Idler End Unit



Idler End Unit with Free Roller



Idler End Unit with Driven Roller



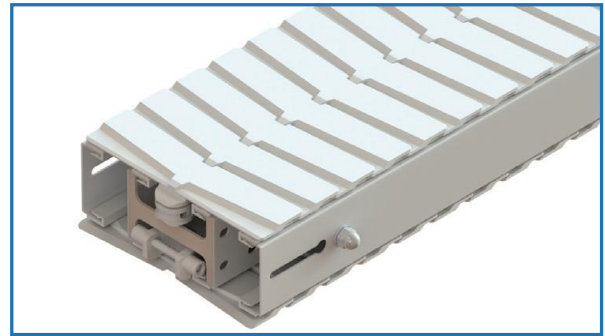
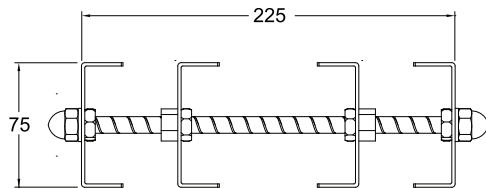
Driven Roller speed is approximately 10% higher than conveyor speed.

- Effective track length: 1.02m
- Connecting strip and M8 hex screw included.

Item Code	Description	Weight	Supply
DX2 IE 400	Basic idler unit	8.4 kg	1 unit
DX2 IE 400 TR	With transfer roller	8.6 kg	1 unit
DX2 IE 400 DR L/R	With driven roller	10.4 kg	1 unit

MODU DX2 SERIES - BEAM AND ACCESSORIES

Conveyor Beam DX2

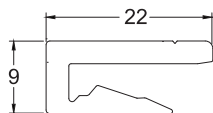


Item Code	Weight	Supply
DX2 CB 2.4	19.2 kg	2.4m / beam
DX2 CB L	**L kg	L / beam

- Available length:
L = between 100, 200mm up 1200mm
- eg: for 200mm beam, part number is DX2 CB 0.2
- if beam required is 1.5m, then L = 1.2m + 0.3m
(order part number = DX2 CB 1.2 & DX2 CB 0.6)

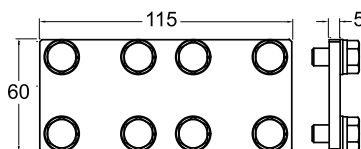
Accessories DX2

Slide Rail

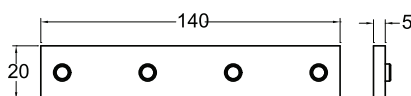


Item Code	Material	Color	Weight	Supply
MA2 SR 25	HDPE	Semi-Transparent White	2.8 kg	25m/roll
MA2 SR 25A	Anti-Static	Grey	2.8 kg	25m/roll
MA2 SR 25U	UHMW-PE	-	-	-

Connecting Strip



Item Code	Weight	Supply
DA CS 5x50.8x115	3.0 kg	10 pcs/pkt



Item Code	Weight	Supply
DA CS 20x140	1.1 kg	10 pcs/pkt

- M8 set screw included

Screw



Item Code	Weight	Supply
MA RS 6.5	0.02 kg	50 pcs/pkt

Slide Rail Mounting Tool



Item Code	Weight	Supply
MX2 SRA	0.4 kg	1 pc

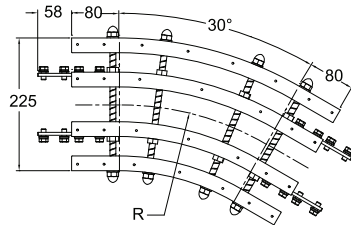
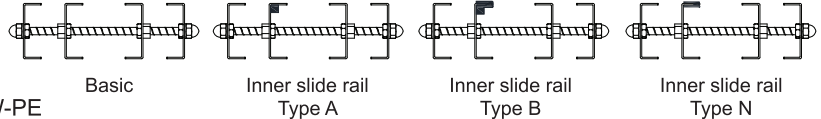
Please consult MODU representative for further information and assistance.

Units: Dimension (mm)

MODU DX2 SERIES - HORIZONTAL PLAIN BEND

Horizontal Plain Bend DX2

Plain bends comes with options for optimum usage
 -With inner slide rail Type A (SA), Material = PE.
 -With inner slide rail Type B (SB), Material = Nylon
 -With inner slide rail Type N (SN), Material = UHMW-PE
 *(SB) is recommended when conveyor speed is 30m/min and above



Effective track length:

R500: 0.66m 1-way (1.32m 2-way)

R700: 0.77m 1-way (1.54m 2-way)

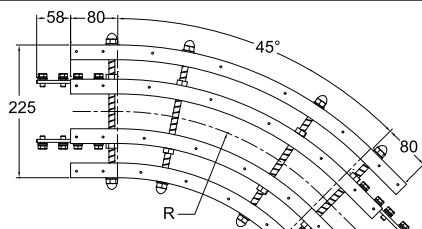
R1000: 0.92m 1-way (1.84m 2-way).

Horizontal Plain Bend, 30°

Item Code	Radius (R)	Weight	Supply
DX2 BP 30R500	500 mm	5.8 kg	1 unit
DX2 BP 30R700	700 mm	6.5 kg	1 unit
DX2 BP 30R1000	1000 mm	8.0 kg	1 unit

Tolerance: $\pm 2^\circ$ & Radius: ± 10 mm

- Connecting strip and M8 hex screw included.



Effective track length:

R500: 0.79m 1-way (1.58m 2-way)

R700: 0.95m 1-way (1.90m 2-way)

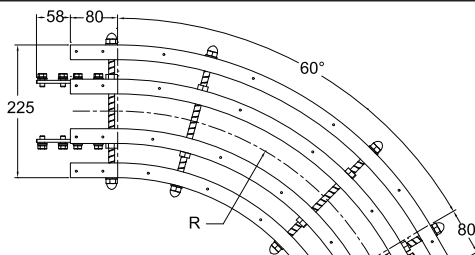
R1000: 1.12m 1-way (2.40m 2-way)

Horizontal Plain Bend, 45°

Item Code	Radius (R)	Weight	Supply
DX2 BP 45R500	500 mm	7.0 kg	1 unit
DX2 BP 45R700	700 mm	8.5 kg	1 unit
DX2 BP 45R1000	1000 mm	10.0 kg	1 unit

Tolerance: $\pm 2^\circ$ & Radius: ± 10 mm

- Connecting strip and M8 hex screw included.



Effective track length:

R500: 0.92m 1-way (1.84m 2-way)

R700: 1.13m 1-way (2.26m 2-way)

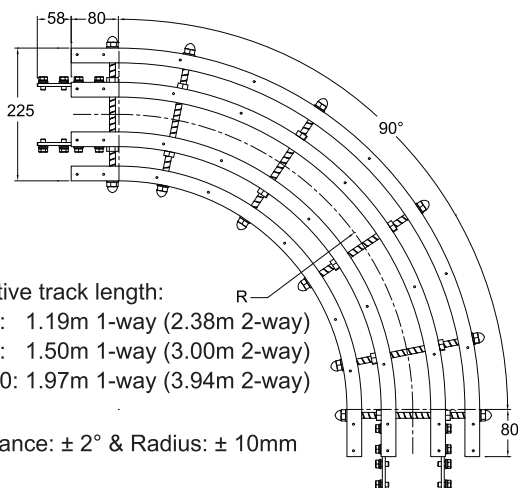
R1000: 1.45m 1-way (2.90m 2-way)

Horizontal Plain Bend, 60°

Item Code	Radius (R)	Weight	Supply
DX2 BP 60R500	500 mm	8.0 kg	1 unit
DX2 BP 60R700	700 mm	9.5 kg	1 unit
DX2 BP 60R1000	1000 mm	12.0 kg	1 unit

Tolerance: $\pm 2^\circ$ & Radius: ± 10 mm

- Connecting strip and M8 hex screw included.



Effective track length:

R500: 1.19m 1-way (2.38m 2-way)

R700: 1.50m 1-way (3.00m 2-way)

R1000: 1.97m 1-way (3.94m 2-way)

Tolerance: $\pm 2^\circ$ & Radius: ± 10 mm

Horizontal Plain Bend, 90°

Item Code	Radius (R)	Weight	Supply
DX2 BP 90R500	500 mm	10.5kg	1 unit
DX2 BP 90R700	700 mm	13.5 kg	1 unit
DX2 BP 90R1000	1000 mm	15.0 kg	1 unit

- Connecting strip and M8 hex screw included.

When ordering plain bends with inner slide rail, please specify the type using the following part number as an example.

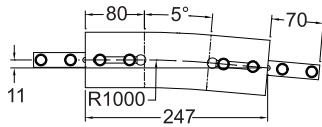
Type A - DX2 BP 30R500 SA

Type B - DX2 BP 90R500 SB

Type N - DX2 BP 90R500 SN

Please consult MODU representative for further information and assistance.

Units: Dimension (mm)

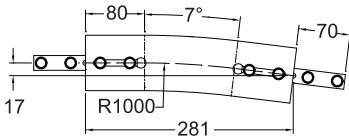
Vertical Bend DX2

Vertical Bend, 5°

Effective track length:

R1000: 0.25m 1-way (0.5m 2-way)

- Tolerance: $\pm 2^\circ$ & Radius: $\pm 10\text{mm}$
- Connecting strip and M8 hex screw included.

Item Code	Weight	Supply
DX2 BV 5R1000	4.0 kg	1 unit

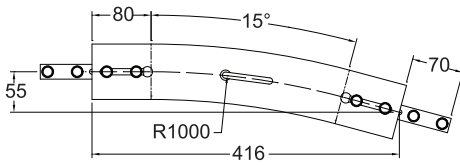

Vertical Bend, 7°

Effective track length:

R1000: 0.28m 1-way (0.56m 2-way)

- Tolerance: $\pm 2^\circ$ & Radius: $\pm 10\text{mm}$
- Connecting strip and M8 hex screw included.

Item Code	Weight	Supply
DX2 BV 7R1000	5.0 kg	1 unit

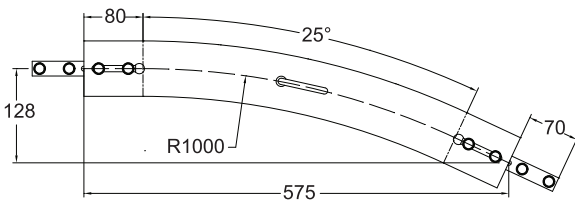

Vertical Bend, 15°

Effective track length:

R1000: 0.42m 1-way (0.84m 2-way)

- Tolerance: $\pm 2^\circ$ & Radius: $\pm 10\text{mm}$
- Connecting strip and M8 hex screw included.

Item Code	Weight	Supply
DX2 BV 15R1000	5.5 kg	1 unit

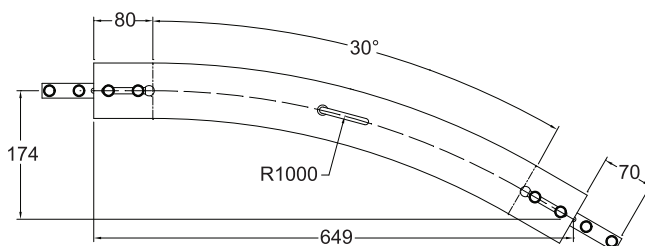

Vertical Bend, 25°

Effective track length:

R1000: 0.60m 1-way (1.20m 2-way)

- Tolerance: $\pm 2^\circ$ & Radius: $\pm 10\text{mm}$
- Connecting strip and M8 hex screw included.

Item Code	Weight	Supply
DX2 BV 25R1000	7.3 kg	1 unit


Vertical Bend, 30°

Effective track length:

R1000: 0.68m 1-way (1.36m 2-way)

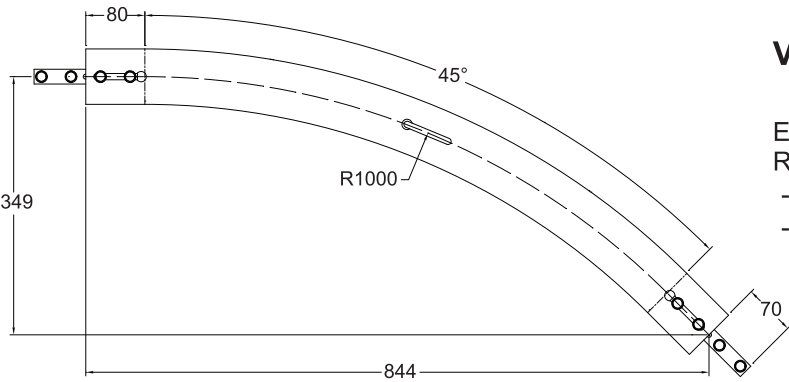
- Tolerance: $\pm 2^\circ$ & Radius: $\pm 10\text{mm}$
- Connecting strip and M8 hex screw included.

Item Code	Weight	Supply
DX2 BV 30R1000	8.5 kg	1 unit

Please consult MODU representative for further information and assistance.

Units: Dimension (mm)

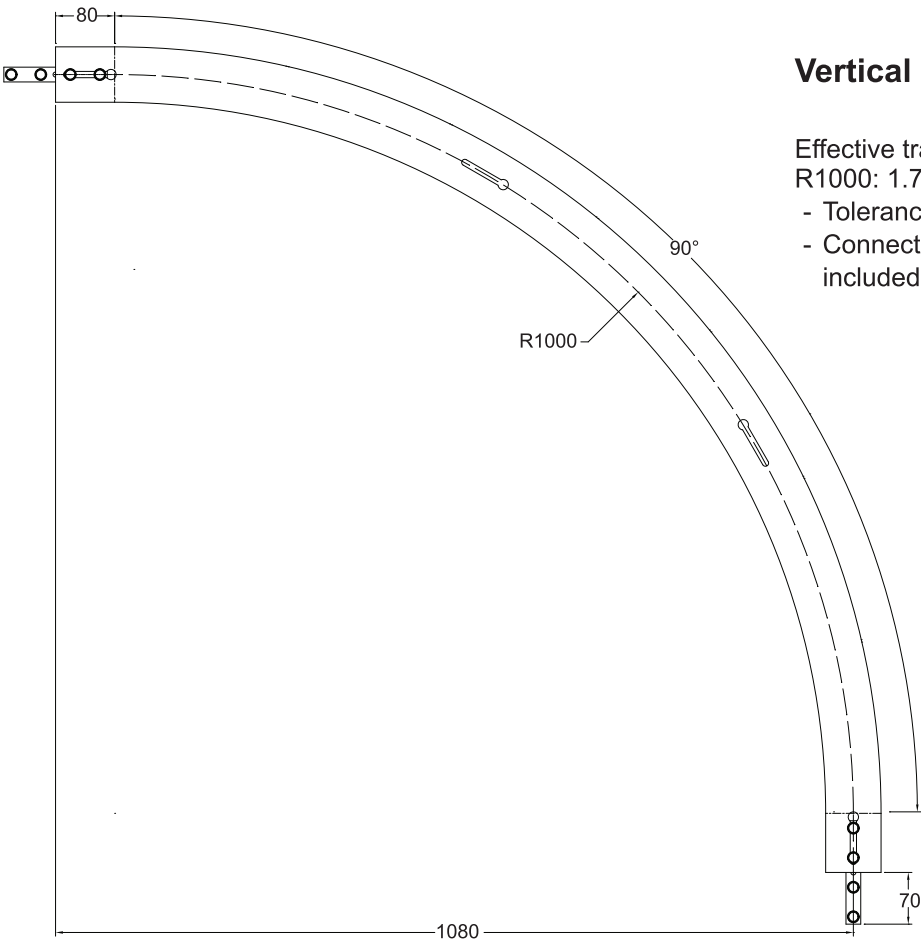
MODU DX2 SERIES - VERTICAL BEND



Vertical Bend, 45°

Effective track length:
R1000: 0.95m 1-way (1.90m 2-way)
- Tolerance: $\pm 2^\circ$ & Radius: $\pm 10\text{mm}$
- Connecting strip and M8 hex screw included.

Item Code	Weight	Supply
DX2 BV 45R1000	10.0 kg	1 unit



Vertical Bend, 90°

Effective track length:
R1000: 1.73m 1-way (3.46m 2-way)
- Tolerance: $\pm 2^\circ$ & Radius: $\pm 10\text{mm}$
- Connecting strip and M8 hex screw included.

Item Code	Weight	Supply
DX2 BV 90R1000	16.5 kg	1 unit

Please consult MODU representative for further information and assistance.

Units: Dimension (mm)